

MPX-885

User's Manual

Edition 1.0

2009/6/17



Copyright

Copyright 2009 all rights reserved. This document is copyrighted and all rights are reserved. The information in this document is subject to change without prior notice to make improvements to the products.

This document contains proprietary information and protected by copyright. No part of this document may be reproduced, copied, or translated in any form or any means without prior written permission of the manufacturer.

All trademarks and/or registered trademarks contains in this document are property of their respective owners.

Disclaimer

The company shall not be liable for any incidental or consequential damages resulting from the performance or use of this product.

The company does not issue a warranty of any kind, express or implied, including without limitation implied warranties of merchantability or fitness for a particular purpose.

The company has the right to revise the manual or include changes in the specifications of the product described within it at any time without notice and without obligation to notify any person of such revision or changes.

Trademark

All trademarks are the property of their respective holders.

Any questions please visit our website at <http://www.commell.com.tw>.

Packing List:

Hardware:

MPX-885 Mini PCI Express Capture Card x1

Cable kit:

Video Cable



4-ch BNC Cable x 1



DB9 Cable x 1

Audio Cable (option)



Audio Cable x 1 (option)



DB9 Cable x 1 (option)

Video Cable (option)



Dual YPbPR + Dual Composite Cable x 1 (option)



4-ch S-Video Cable x 1 (option)



8-ch BNC Cable x 1 (option)



8-ch Composite Cable x 1 (option)

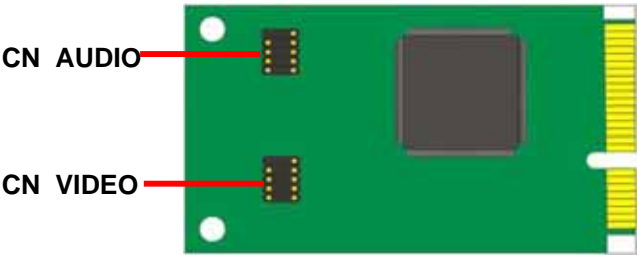
CD Content:

Drivers & User's Manual

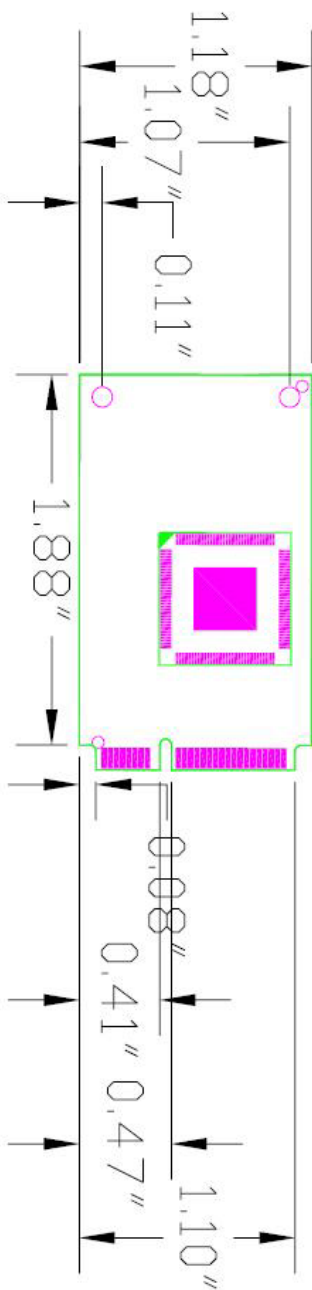
1.0 <Product Specification>

General Specification	
Form Factor	PCI Express mini card
Controller	One CX23885 chip onboard
Accessories	1 x 10-pin header to 1 x D-sub 9 Cable 1 x D-sub 9 to 4 x BNC connector Cable 1 x 10-pin header to 1 x D-sub 9 Cable(option)-Audio 1 x D-sub 9 to 4 channel Audio Cable(option)-Audio 1 x D-sub 9 to 4 x S-Video Cable(option)-4 x S-Video 1 x D-sub 9 to 2 x YPbPr & 2 x Composite Cable(option)--- 2 x YPbPr + 2 x Composite 1 x D-sub 9 to 8 x Composite Cable(option)-8 x Composite 1 x D-sub 9 to 8 x BNC connector Cable(option)-8 x Video input
Features	4 channel video inputs share with 30 fps NTSC: 720 x 480 @ 30 FPS PAL: 720 x 576 @ 25 FPS Support NTSC/PAL video decoding Support image capture resolutions up to 768 x 576, 768 x 288, 352 x 288 (PAL) 720 x 480, 720 x 240 , 320 x 240 (NTSC)
Dimensions (L x W)	51mm x 30mm

1.1 <Component Placement>



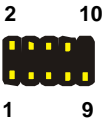
1.2 <Mechanical Drawing>



1.3 <Connector Reference>

Connector: CN_VIDEO

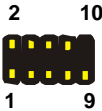
Type: 10-pin (5x2) header



Pin	Description	Pin	Description
1	VIDEO1	2	VIDEO2
3	VIDEO3	4	VIDEO4
5	Ground	6	VIDEO5
7	VIDEO6	8	VIDEO7
9	VIDEO8	10	N/C

Connector: CN_AUDIO

Type: 10-pin (5x2) header



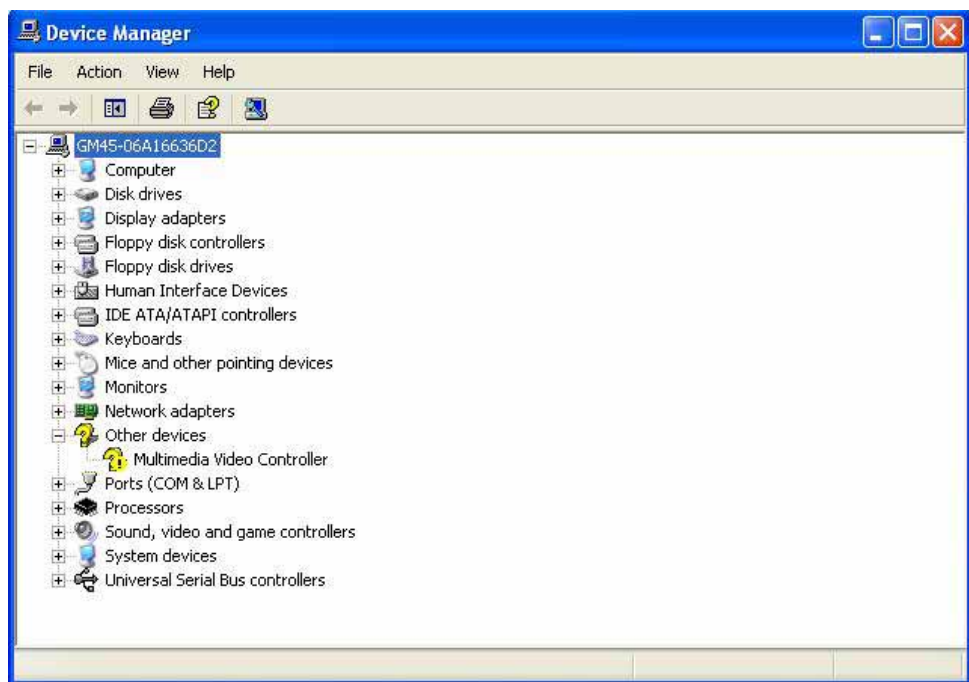
Pin	Description	Pin	Description
1	VL1	2	VL2
3	N/C	4	N/C
5	GND	6	VR1
7	VR2	8	N/C
9	N/C		

1.4 <Driver Setting>

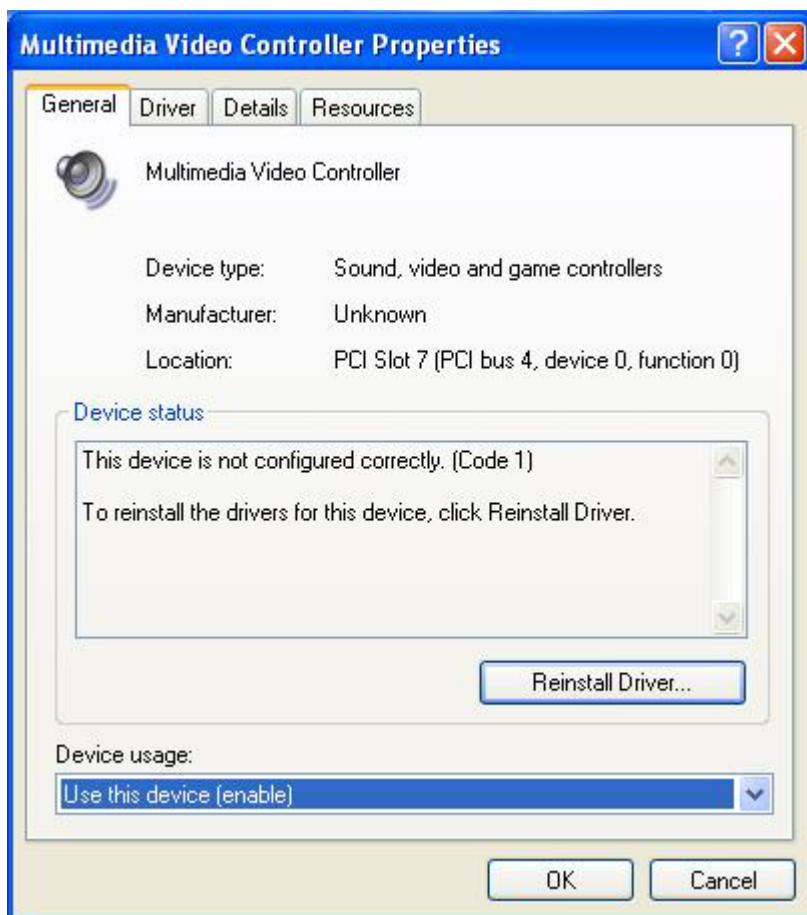
1. Please choose **Device Manager**



2. Then you can see **other devices**



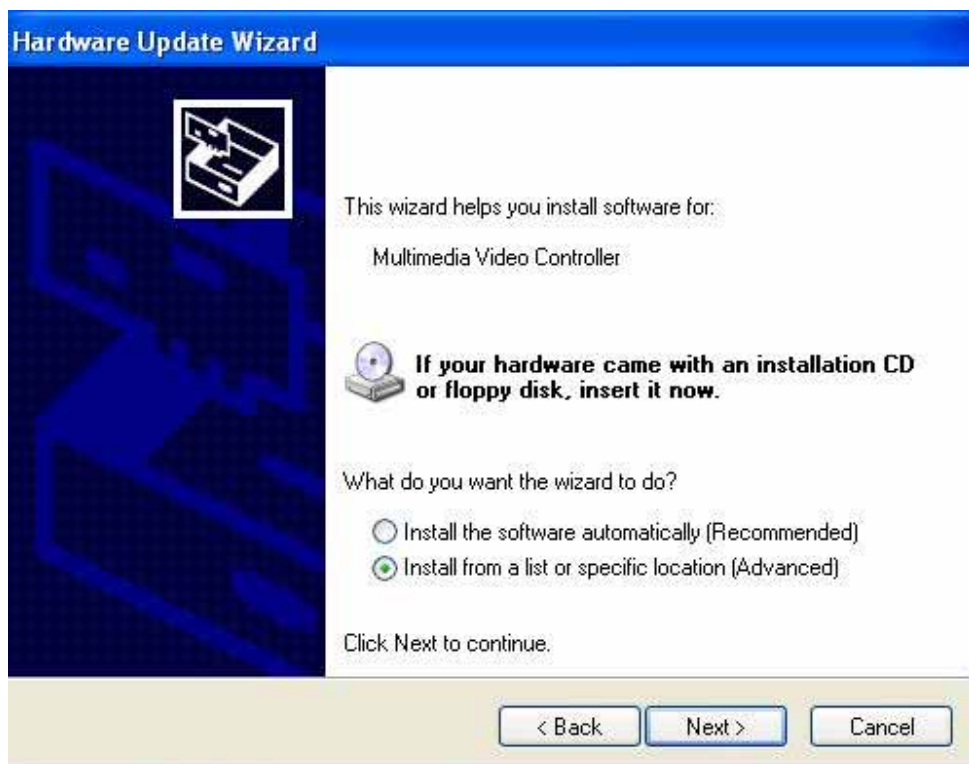
3. Please choose **Multimedia Video Controller then press **Reinstall Driver****



4. Please choose **NO** , not this time press next.



5. Please choose **Install from a list on specific Location**



6. Please select file location **E:\Driver\MPX-885** then press **OK**.

Hardware Update Wizard

Please choose your search and installation options.



- ☒ Search for the best driver in these locations.

Use the check boxes below to limit or expand the default search, which includes local paths and removable media. The best driver found will be installed.

☐ Search removable media (floppy, CD-ROM...)

☒ Include this location in the search:

E:\Driver\MPX-885



Browse

- ☐ Don't search. I will choose the driver to install.

Choose this option to select the device driver from a list. Windows does not guarantee that the driver you choose will be the best match for your hardware.

< Back

Next >

Cancel

7. After driver install, please enter Device Manager then select **Conexant CX23885 AVS Video Capture(Sonora)** press properties.



Contact Information

Any advice or comment about our products and service, or anything we can help you please don't hesitate to contact with us. We will do our best to support you for your products, projects and business.

Taiwan Commate Computer Inc.

Address	19F, No. 94, Sec. 1, Shin Tai Wu Rd., Shi Chih Taipei Hsien, Taiwan
TEL	+886-2-26963909
FAX	+886-2-26963911
Website	http://www.commell.com.tw
E-Mail	info@commell.com.tw (General Information) tech@commell.com.tw (Technical Support)

Commell is the trademark of Taiwan Commate Computer INC.