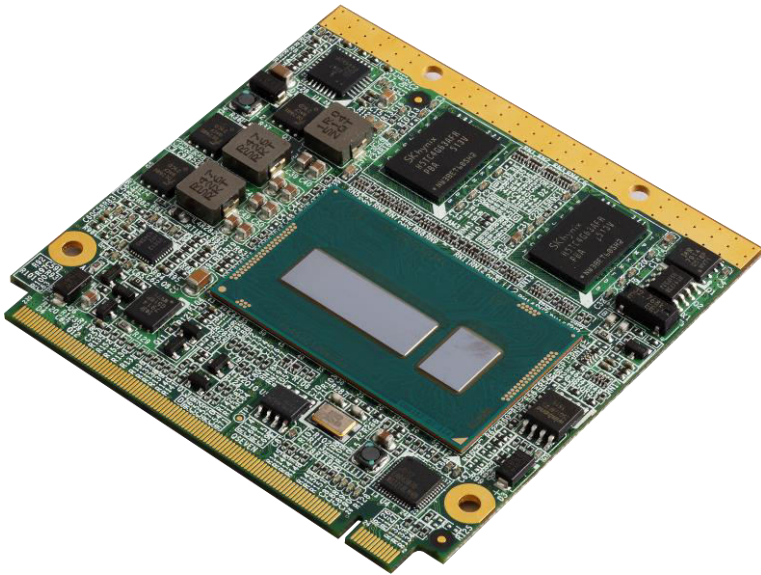


QE-E71

Qseven Module

User's Manual

Edition 1.1
2016/01/14



Copyright

Copyright 2015, all rights reserved. This document is copyrighted and all rights are reserved. The information in this document is subject to change without prior notice to make improvements to the products.

This document contains proprietary information and protected by copyright. No part of this document may be reproduced, copied, or translated in any form or any means without prior written permission of the manufacturer.

All trademarks and/or registered trademarks contains in this document are property of their respective owners.

Disclaimer

The company shall not be liable for any incidental or consequential damages resulting from the performance or use of this product.

The company does not issue a warranty of any kind, express or implied, including without limitation implied warranties of merchantability or fitness for a particular purpose.

The company has the right to revise the manual or include changes in the specifications of the product described within it at any time without notice and without obligation to notify any person of such revision or changes.

Trademark

All trademarks are the property of their respective holders.

Any questions please visit our website at <http://www.commell.com.tw>

Packing List:

Please check the package content before you starting using the board.

1 x QE-E71 Qseven module
(include Heat conductive sheet)



Optional :

Cooler Fan



Index

Chapter 1 <Introduction>	3
1.1 <Product Overview>.....	3
1.2 <Product Specification>	4
1.3 <Mechanical Drawing>.....	5
1.4 <Block Diagram>.....	6
Chapter 2 <Hardware setup>	7
2.1 <Qseven interface pin assignment>	7
Appendix A <Flash BIOS>	10
Appendix B <Installation driver Notes>	11
Appendix C <Using QE-E71 carrier board notes>	12
Contact information	13

Chapter 1 <Introduction>

1.1 <Product Overview>

QE-E71 is Qseven module which supports 5th/4th Generation Intel® Core™ U-series i7, i5, i3, Celeron Mobile Processor with Wildcat Point PCH-LP, integrated HD Graphics, DDR3L memory, Realtek High Definition Audio, Intel Gigabit LAN, Serial ATA3 with AHCI function for a system.

Intel Broadwell-U Processor with Wildcat Point PCH-LP

The 5th Generation Intel® Core™ U-series processor family is the next generation and compatible with Haswell-U, multi-core mobile processor built on 14/22 nanometer process with MCP technology.

The Broadwell-U has a lower TDP 15W and 28W, it provides new HD Graphics (GT2 and GT3 GPU) support triple display at the same time, maximum supported is up to 16GB of DDR3L, better performance, flexibility and more enhanced security that is suitable for a variety of intelligent systems the ideal choice.

All in One multimedia solution

The board provides high performance onboard graphics, DDI (Digital Display Interface) which supports DisplayPort, HDMI and DVI, eDP, High Definition Audio, to meet the very requirement of the multimedia application.

Flexible Expansion Interface

The board provides four PCIe x1 to expand PCIe device or PCIe, miniPCIe, ... etc interface or combined into 1 x PCIe x4.

1.2 <Product Specification>

System

Processor	Intel® Broadwell/Haswell Core™ i7, i5, i3, Celeron U-series Processor FCBGA1168 with MCP
Chipset	Wildcat Point-LP
Memory	DDR3L 1600 MHz 2/4GB memory down
Expansion	4 x PCIe x1 or 1 x PCIe x4

Graphics

Chipset	Intel® 5th/4th Gen integrated HD Graphics
Display Interface	2 x DDI for HDMI or DVI-D or DisplayPort, 1 x eDP

LAN

Chip	1 x Intel® I218-LM Gigabit LAN (Support iAMT10.0)
------	---

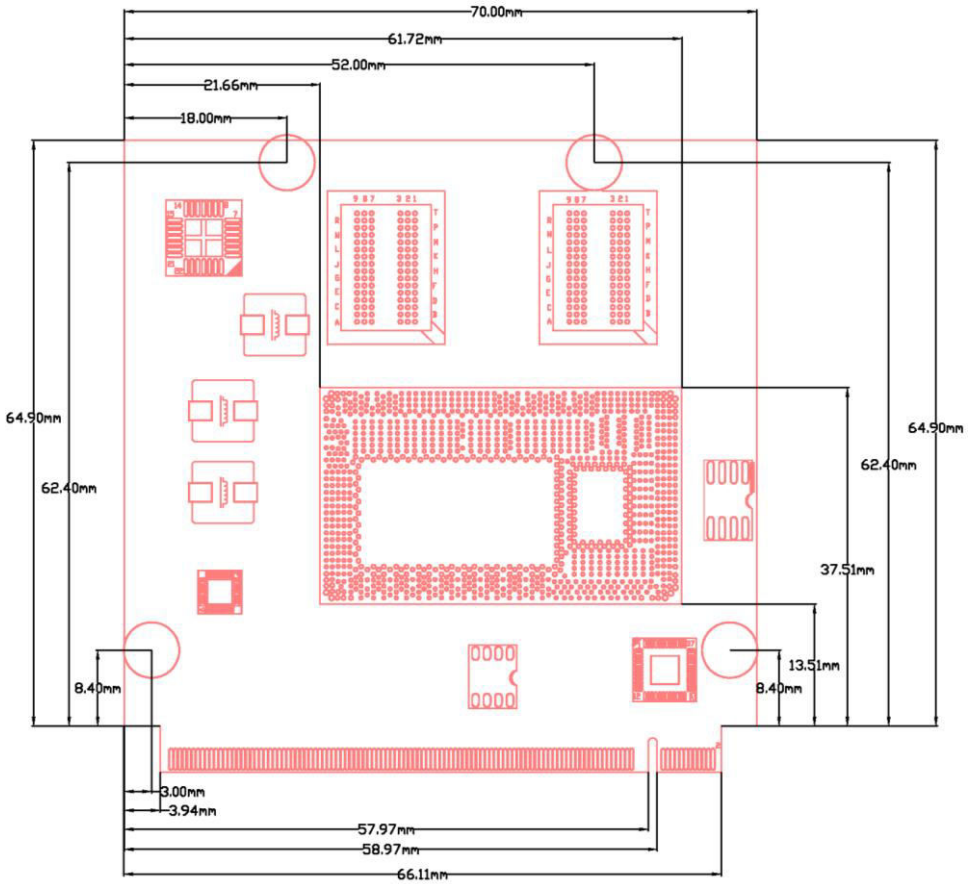
I/O

Audio	Support High Definition Audio Interface
Expansion I/O	2 x SATA3, 2 x USB2.0, 2 x USB3.0, 1 x LPC, 1 x SMBUS

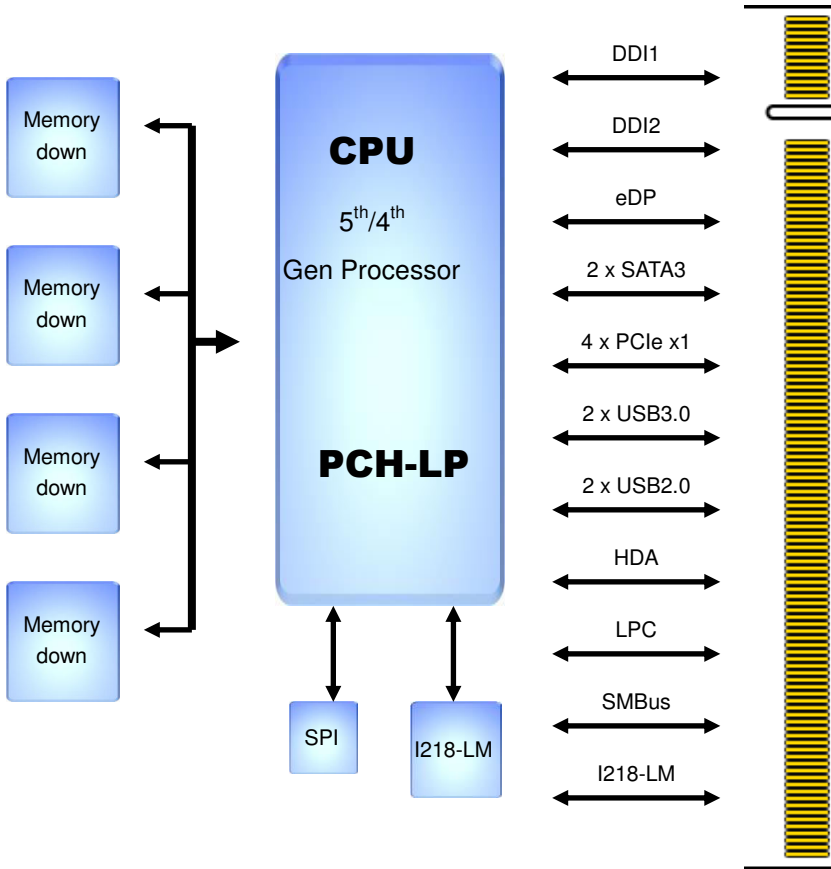
Mechanical & Environmental

Power Requirement	DC input 5V & 5VSB & RTC
Size & Thickness	70mm x 70mm (L x W), 1.2mm
Temperature	Operating within 0°C~60°C (32°F~140°F) Storage within -20°C~80°C (-4°F~176°F)
Relative Humidity	10%~90%, non-condensing

1.3 <Mechanical Drawing>



1.4 <Block Diagram>



Chapter 2 <Hardware setup>

2.1 <Qseven interface pin assignment>

Pin	Signal	Pin	Signal
1	GND	2	GND
3	GBE_MDI3-	4	GBE_MDI2-
5	GBE_MDI3+	6	GBE_MDI2+
7	GBE_LINK100#	8	GBE_LINK1000#
9	GBE_MDI1-	10	GBE_MDI0-
11	GBE_MDI1+	12	GBE_MDI0+
13	GBE_LINK#	14	GBE_ACT#
15	GBE_CTREF (0.9V)	16	SUS_S5#
17	WAKE#	18	SUS_S3#
19	SUS_STAT#	20	PWRBTN
21	NC	22	NC
23	GND	24	GND
Key			
25	GND	26	PWGIN
27	BATLOW#	28	RSTBTN#
29	SATA0_TX+	30	SATA1_TX+
31	SATA0_TX-	32	SATA1_TX-
33	SATA_ACT#	34	GND
35	SATA0_RX+	36	SATA1_RX+
37	SATA0_RX-	38	SATA1_RX-
39	BIOS_DISABLE#	40	GND
41	NC	42	NC
43	NC	44	NC
45	NC	46	NC
47	NC	48	NC
49	NC	50	NC
51	NC	52	NC
53	NC	54	NC
55	NC	56	NC
57	GND	58	GND
59	HDA_SYNC	60	SMB_CLK
61	HDA_RST#	62	SMB_DAT
63	HDA_BITCLK	64	SMB_ALERT#
65	HDA_SDI	66	NC
67	HDA_SDO	68	NC
69	THRM#	70	NC

Pin	Signal	Pin	Signal
71	THRMTRIP#	72	WDOUT
73	GND	74	GND
75	USB_SSTX0-	76	USB_SSRX0-
77	USB_SSTX0+	78	USB_SSRX0+
79	USB_6_7_OC#	80	USB_4_5_OC#
81	USB_SSTX1-	82	USB_SSRX1-
83	USB_SSTX1+	84	USB_SSRX1+
85	USB_2_3_OC#	86	USB_0_1_OC#
87	USB_P3-	88	USB_P2-
89	USB_P3+	90	USB_P2+
91	NC	92	NC
93	USB_P1-	94	USB_P0-
95	USB_P1+	96	USB_P0+
97	GND	98	GND
99	eDP0_TX0+	100	DP1_LANE0+
101	eDP0_TX0-	102	DP1_LANE0-
103	eDP0_TX1+	104	DP1_LANE1+
105	eDP0_TX1-	106	DP1_LANE1-
107	eDP0_TX2+	108	DP1_LANE2+
109	eDP0_TX2-	110	DP1_LANE2-
111	LVDS_PPEN	112	LVDS_BLEN
113	eDP0_TX3+	114	DP1_LANE3+
115	eDP0_TX3-	116	DP1_LANE3-
117	GND	118	GND
119	eDP0_AUX+	120	DP1_AUX+
121	eDP0_AUX-	122	DP1_AUX-
123	LVDS_BLT_CTRL	124	NC
125	NC	126	eDP0_HPD#
127	NC	128	DP1_HDMI1_HPD#
129	NC	130	NC
131	DP0_LANE3+	132	NC
133	DP0_LANE3-	134	NC
135	GND	136	GND
137	DP0_LANE1+	138	DP0_AUX+
139	DP0_LANE1-	140	DP0_AUX-
141	GND	142	GND
143	DP0_LANE2+	144	NC
145	DP0_LANE2-	146	NC
147	GND	148	GND
149	DP0_LANE0+	150	HDMI_CTRL_DAT

Pin	Signal	Pin	Signal
151	DP0_LANE0-	152	HDMI_CTRL_CLK
153	DP0_HDMI0_HPD#	154	NC
155	PCIE_CLK_REF+	156	PCIE_WAKE#
157	PCIE_CLK_REF-	158	PCIE_RST#
159	GND	160	GND
161	PCIE3_TX+	162	PCIE3_RX+
163	PCIE3_TX-	164	PCIE3_RX-
165	GND	166	GND
167	PCIE2_TX+	168	PCIE2_RX+
169	PCIE2_TX-	170	PCIE2_RX-
171	NC	172	NC
173	PCIE1_TX+	174	PCIE1_RX+
175	PCIE1_TX-	176	PCIE1_RX-
177	NC	178	NC
179	PCIE0_TX+	180	PCIE0_RX+
181	PCIE0_TX-	182	PCIE0_RX-
183	GND	184	GND
185	LPC_AD0	186	LPC_AD1
187	LPC_AD2	188	LPC_AD3
189	LPC_CLK	190	LPC_FRAME#
191	SERIRQ	192	NC
193	VCC_RTC	194	SPKR
195	NC	196	NC
197	GND	198	GND
199	SPI_MOSI	200	SPI_CS0#
201	SPI_MISO	202	SPI_CS1#
203	SPI_CLK	204	NC
205	VCC_5V_SB	206	VCC_5V_SB
207	NC	208	NC
209	NC	210	NC
211	VCC	212	VCC
213	VCC	214	VCC
215	VCC	216	VCC
217	VCC	218	VCC
219	VCC	220	VCC
221	VCC	222	VCC
223	VCC	224	VCC
225	VCC	226	VCC
227	VCC	228	VCC
229	VCC	230	VCC

Appendix A <Flash BIOS>

A.1 <Flash tool>

The board is based on Phoenix BIOS and can be updated easily by the BIOS auto flash tool. You can download the tool online at the address below:

<http://www.commell.com.tw/Download/BIOS/FPT10.rar>

The tool's file name is "fpt.exe", it's the utility that can write the data into the BIOS flash chip and update the BIOS.

A.2 <Flash BIOS process>

1. Please make a bootable UFD which can boot into DOS environment.
2. Unzip the flash tool and copy it into bootable UFD.
3. Add a bin file to the same folder..
4. Power on the system and flash the BIOS under the DOS environment.
(Command: fpt -savemac -f xxx.bin)
5. Power off the system and then power on.

Appendix B <Installation driver Notes>

B.1 <iAMT(ME) driver>

Before installing, it need to install Microsoft Hotfix KB2685611 first for Win7 32/64 bit. More information please refer

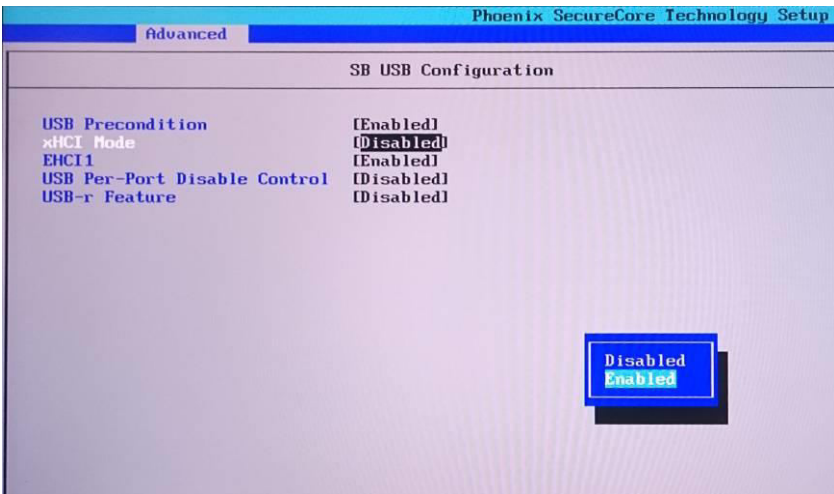
<https://www.microsoft.com/en-us/download/details.aspx?id=38423>

B.2 <USB3.0 driver>

Before Win7 install the USB3.0 driver or use in Win8 and Win8.1, xHCI needs to be enabled in the BIOS.

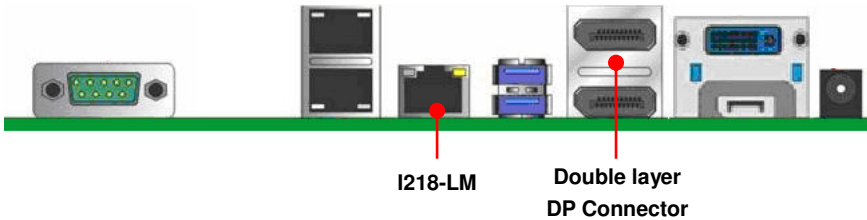
Note that if enable xHCI, all USB port will unusable in Win7. So first need copy driver folder to your HDD, then enable xHCI, and use PS/2 to do install. The path is "X:\Driver\USB3.0\Intel_USB_3.0_xHC_Driver_4.0.0.27_PV"

Advanced > South Bridge Configuration > SB USB Config > xHCI Mode



Appendix C <Using QE-E71 carrier board notes>

Commell LE-5Q0 with QE-E71 rear I/O



The I218-LM Gigabit Ethernet is provided from QE-E71.

Some pins in QE-E71 does not follow the Qseven 2.0 specification (Pin 100, 102, 104, 106, 108, 110, 114, 116, 120, 122, 128. Please see subsection 2.1 red mark pins), these pins do not support eDP signal, replaced by DP signal.

When using Commell LE-5Q0 carrier board, the double layer DP connector **only upper side** has function, lower side is NC.

The QE-E71 has onboard SPI (BIOS flash ROM), if carrier board also has SPI, it must be disabled QE-E71 onboard SPI. (Use Pin 39)

Contact information

Any advice or comment about our products and service, or anything we can help you please don't hesitate to contact with us. We will do our best to support you for your products, projects and business.

Taiwan Commate computer Inc.

Address	19F., NO.94, Sec. 1, Xintai 5 th Rd., Xizhi Dist., New Taipei City 22102, Taiwan.
TEL	+886-2-26963909
FAX	+886-2-26963911
Website	www.commell.com.tw
E-mail	info@commell.com.tw (General information) tech@commell.com.tw (Technical Support)

Commell is a brand name of Taiwan Commate computer Inc.