

# MPX-885

---

## User's Manual

Edition 1.4  
2010/07/01



## **Copyright**

Copyright 2009 all rights reserved. This document is copyrighted and all rights are reserved. The information in this document is subject to change without prior notice to make improvements to the products.

This document contains proprietary information and protected by copyright. No part of this document may be reproduced, copied, or translated in any form or any means without prior written permission of the manufacturer.

All trademarks and/or registered trademarks contains in this document are property of their respective owners.

## **Disclaimer**

The company shall not be liable for any incidental or consequential damages resulting from the performance or use of this product.

The company does not issue a warranty of any kind, express or implied, including without limitation implied warranties of merchantability or fitness for a particular purpose.

The company has the right to revise the manual or include changes in the specifications of the product described within it at any time without notice and without obligation to notify any person of such revision or changes.

## **Trademark**

All trademarks are the property of their respective holders.

---

Any questions please visit our website at <http://www.commell.com.tw>.

# Packing List:

## Hardware:

MPX-885 Mini PCI Express Capture Card x1

Cable kit:

## Video Cable



4-ch BNC Cable x 1  
(OALBNCE4)



DB9 Cable x 1  
(OALES-BKU1)

## Audio Cable (option)



Audio Cable x 1 (option)  
(OALDB9-AUD4-885)



DB9 Cable x 1 (option)  
(OALES-BKU1)

## Video Cable (option)



**Dual YPbPR + Dual Composite  
Cable x 1 (option)  
(OALDB9-HDTV-885)**



**4-ch S-Video Cable x 1 (option)  
(OALDB9-4S-885)**



**8-ch BNC Cable x 1 (option)  
(OALBNCE8)**



**8-ch Composite Cable x 1 (option)  
(OALDB9-AUD8)**

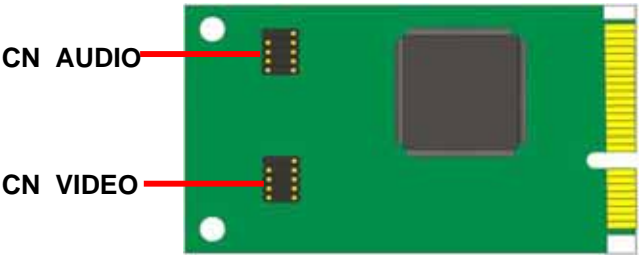
## CD Content:

Drivers & User's Manual

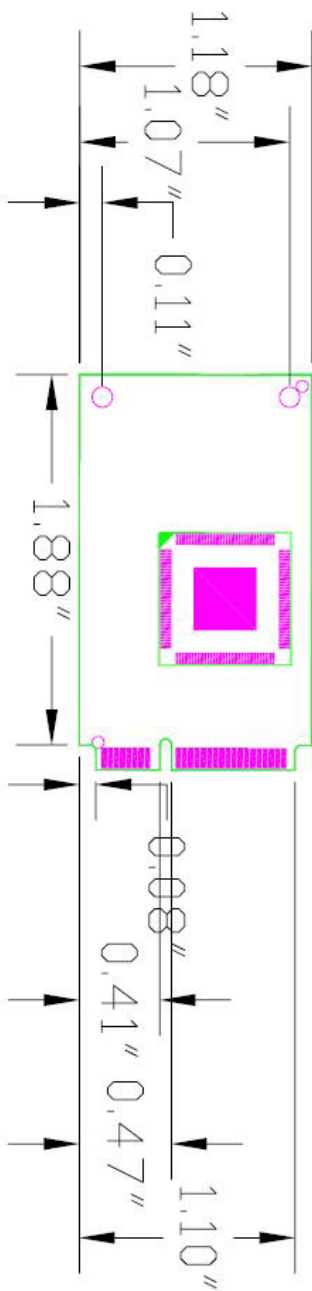
# 1.0 <Product Specification>

General Specification	
Form Factor	PCI Express mini card
Controller	One CX23885 chip onboard
Accessories	1 x 10-pin header to 1 x D-sub 9 Cable 1 x D-sub 9 to 4 x BNC connector Cable 1 x 10-pin header to 1 x D-sub 9 Cable(option)-Audio 1 x D-sub 9 to 4 channel Audio Cable(option)-Audio 1 x D-sub 9 to 4 x S-Video Cable(option)-4 x S-Video 1 x D-sub 9 to 2 x YPbPr & 2 x Composite Cable(option)--- 2 x YPbPr + 2 x Composite 1 x D-sub 9 to 8 x Composite Cable(option)-8 x Composite 1 x D-sub 9 to 8 x BNC connector Cable(option)-8 x Video input
Features	4 channel video inputs share with 30 fps NTSC: 720 x 480 @ 30 FPS PAL: 720 x 576 @ 25 FPS Support NTSC/PAL video decoding Support image capture resolutions up to 768 x 576, 768 x 288, 352 x 288 (PAL) 720 x 480, 720 x 240 , 320 x 240 (NTSC)
Dimensions (L x W)	51mm x 30mm

## 1.1 <Component Placement>



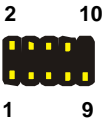
## 1.2 <Mechanical Drawing>



### 1.3 <Connector Reference>

Connector: CN\_VIDEO

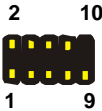
Type: 10-pin (5x2) header



Pin	Description	Pin	Description
1	VIDEO1	2	VIDEO2
3	VIDEO3	4	VIDEO4
5	Ground	6	VIDEO5
7	VIDEO6	8	VIDEO7
9	VIDEO8	10	N/C

Connector: CN\_AUDIO

Type: 10-pin (5x2) header



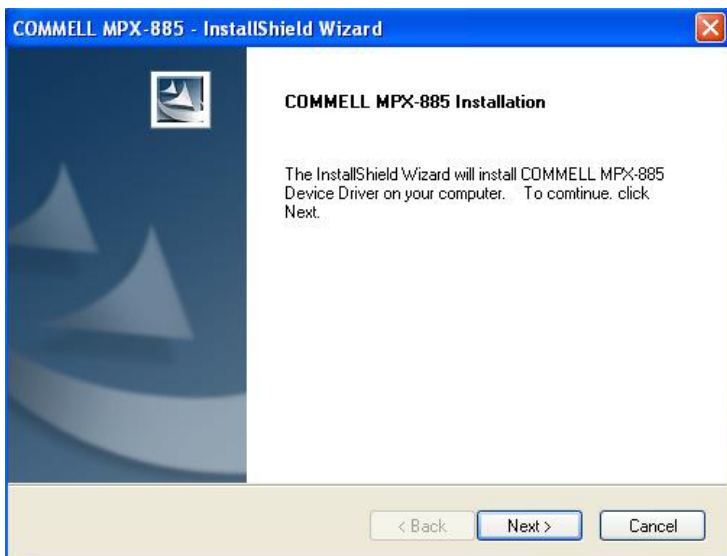
Pin	Description	Pin	Description
1	VL1	2	VL2
3	N/C	4	N/C
5	GND	6	VR1
7	VR2	8	N/C
9	N/C		

## 1.4 <Driver Setting>

1. Insert the driver CD into your system's CD-ROM to Set up MPX-885 [Setup MPX-885\(20091012\).exe](#).

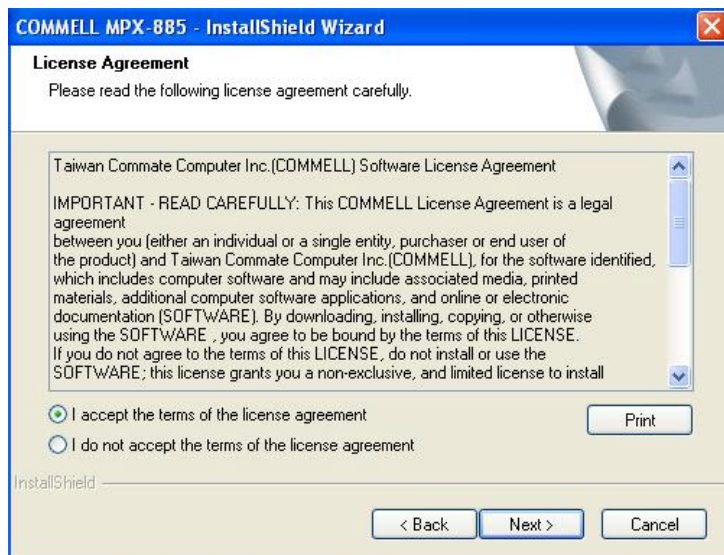
(E:/Driver/MPX-885/SDK(1.1)/Setup MPX-885(20091012).exe)

Please select “Next” to continue.



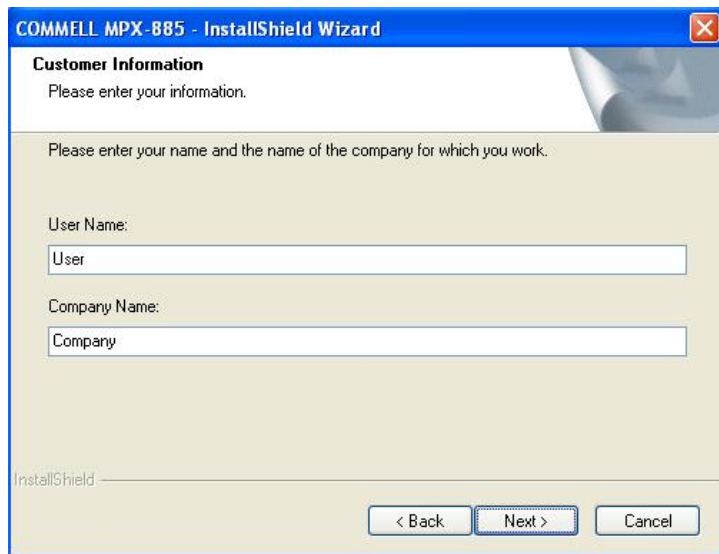


**2. Please read the following License Agreement. Press the Page Down key to see the rest of agreement and click “Next” to continue the installation.**



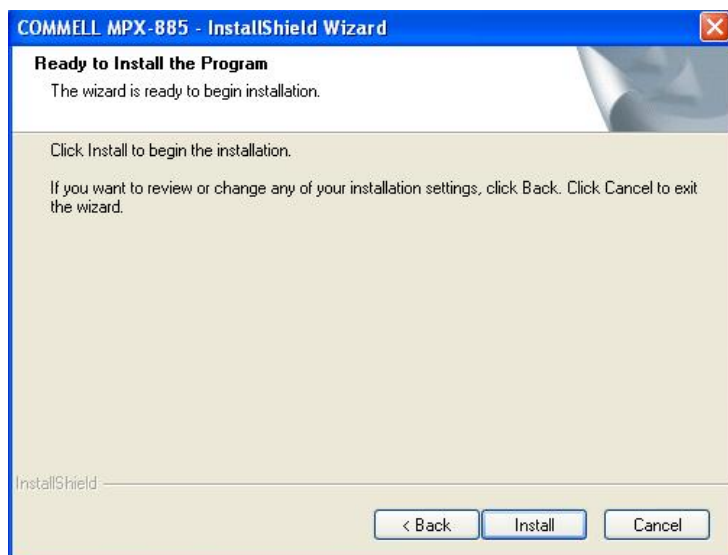
The screenshot shows the 'License Agreement' window of the 'COMMELL MPX-885 - InstallShield Wizard'. The window has a blue title bar with the text 'COMMELL MPX-885 - InstallShield Wizard' and a close button. Below the title bar, the text 'License Agreement' is displayed, followed by the instruction 'Please read the following license agreement carefully.' The main content area contains the 'Taiwan Commate Computer Inc.(COMMELL) Software License Agreement'. The text states: 'IMPORTANT - READ CAREFULLY: This COMMELL License Agreement is a legal agreement between you (either an individual or a single entity, purchaser or end user of the product) and Taiwan Commate Computer Inc.(COMMELL), for the software identified, which includes computer software and may include associated media, printed materials, additional computer software applications, and online or electronic documentation (SOFTWARE). By downloading, installing, copying, or otherwise using the SOFTWARE, you agree to be bound by the terms of this LICENSE. If you do not agree to the terms of this LICENSE, do not install or use the SOFTWARE; this license grants you a non-exclusive, and limited license to install'. Below the text, there are two radio buttons: the first is selected and labeled 'I accept the terms of the license agreement', and the second is labeled 'I do not accept the terms of the license agreement'. To the right of the radio buttons is a 'Print' button. At the bottom of the window, there are three buttons: '< Back', 'Next >', and 'Cancel'. The 'InstallShield' logo is visible in the bottom left corner.

**3. Please select fill in your User Name & Company Name. Then, click “Next”.**



The screenshot shows the 'Customer Information' window of the 'COMMELL MPX-885 - InstallShield Wizard'. The window has a blue title bar with the text 'COMMELL MPX-885 - InstallShield Wizard' and a close button. Below the title bar, the text 'Customer Information' is displayed, followed by the instruction 'Please enter your information.' The main content area contains the text 'Please enter your name and the name of the company for which you work.' Below this text, there are two input fields: the first is labeled 'User Name:' and contains the text 'User'; the second is labeled 'Company Name:' and contains the text 'Company'. At the bottom of the window, there are three buttons: '< Back', 'Next >', and 'Cancel'. The 'InstallShield' logo is visible in the bottom left corner.

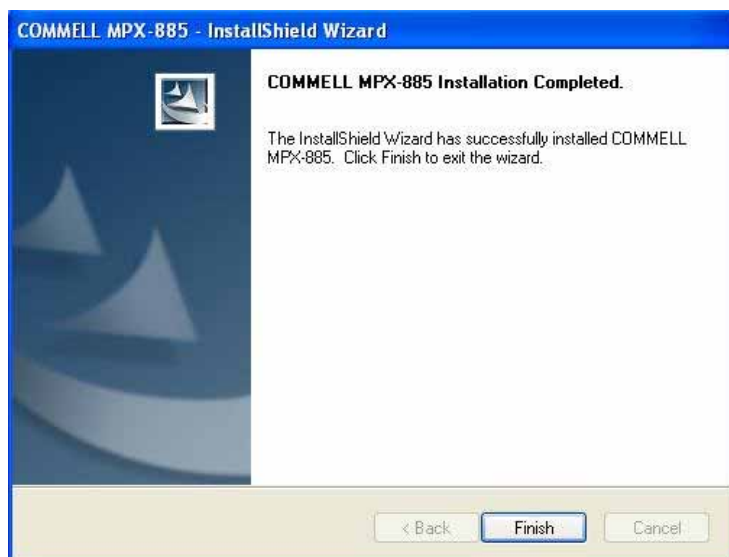
4. Please select “Install” in this page.



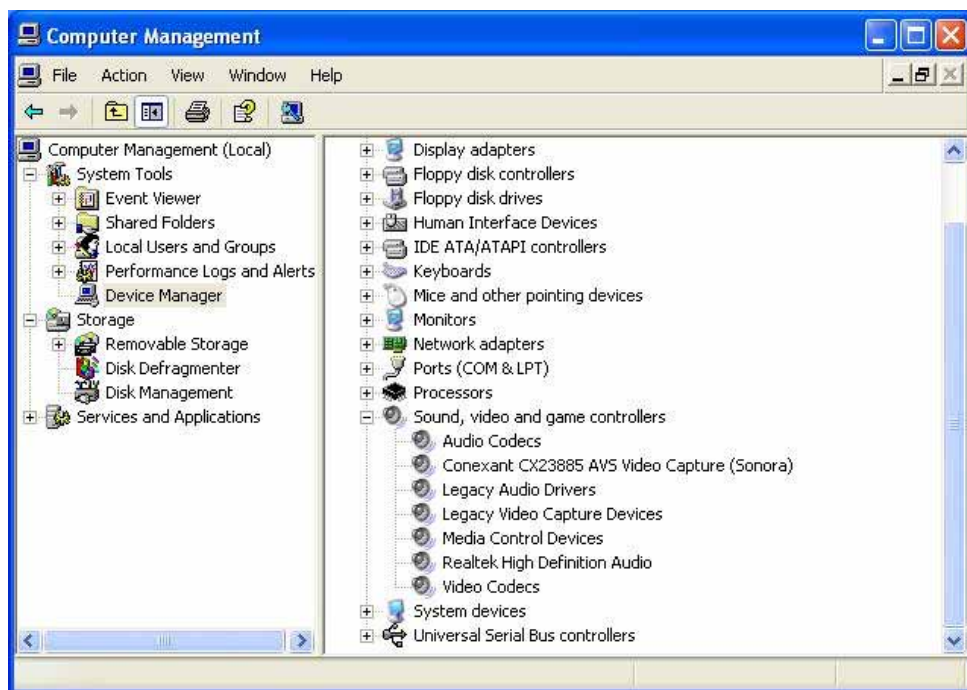
5. Please Click “Continue Anyway”, when you see the following message.



**6. Please click “Finish” to complete the installation.**



7. After driver install, please enter Device Manager then select **Conexant CX23885 AVS Video Capture(Sonora)** press properties.



## 1.5 <Sample Program>

When you completed hardware & software installation, you can use COMMELL “Launch COMMELLDVC App” sample program to test.

You can find Launch COMMELLDVC App.exe on desktop.



Please double –click “Launch COMMELLDVC App.exe”, It’ll pops up as following. Then Please Push “Preview” on the left-upper Menu.



You'll get the program interface as following.



## Explanation of Sample program function

Video Control

Device ID: 0

Channel 0

Status: Idle

Color: N/A

Video Size View

Rate: 0 f/s

Video Resolution: N/A

Video Standard: None

Image Adjustment

START SnapShot

Channel No Setup

Device Ch

0 1

Callback Test Close

### Device ID:

It is mean CX23885 Chipset.

### Channel ID:

Support Video input per device.

### Snapshot:

Catch the image on working channel.

### Callback Test:

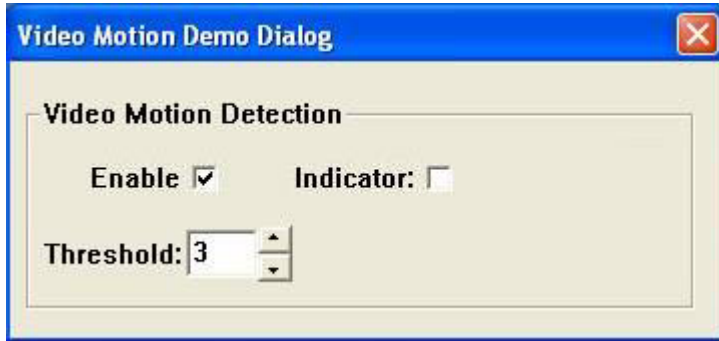
Catch the series image on working channel

### Note:

Every channel works separately, when you want to change any setting, please stop all channels which are working.

## <Video Motion>

Please choose “Video Motion”, then you can see program interface as following.



### **Enable:**

If user “check” this box, it will enable video motion detection.

### **Indicator:**

If this box is checked, it will show red spots as a motion indication, when the video motion is been detected.

### **Threshold:**

Select motion detection sensitivity level. The smaller number makes it more sensitive.

## <Audio Function>

MPX-885 SDK doesn't support Audio function test, if you want to test Audio, please update driver D:\PR\Driver\MPX-885\Standard Driver and use graphedt.exe.



## Contact Information

Any advice or comment about our products and service, or anything we can help you please don't hesitate to contact with us. We will do our best to support you for your products, projects and business.

### Taiwan Commate Computer Inc.

---

Address	19F, No. 94, Sec. 1, Shin Tai Wu Rd., Shi Chih Taipei Hsien, Taiwan
TEL	+886-2-26963909
FAX	+886-2-26963911
Website	<a href="http://www.commell.com.tw">http://www.commell.com.tw</a>
E-Mail	<a href="mailto:info@commell.com.tw">info@commell.com.tw</a> (General Information) <a href="mailto:tech@commell.com.tw">tech@commell.com.tw</a> (Technical Support)

---

**Commell is the trademark of Taiwan Commate Computer INC.**