

# MP-954GPS

---

User's Manual

Edition 1.0



## **Copyright**

Copyright 2006 all rights reserved. This document is copyrighted and all rights are reserved. The information in this document is subject to change without prior notice to make improvements to the products.

This document contains proprietary information and protected by copyright. No part of this document may be reproduced, copied, or translated in any form or any means without prior written permission of the manufacturer.

All trademarks and/or registered trademarks contains in this document are property of their respective owners.

## **Disclaimer**

The company shall not be liable for any incidental or consequential damages resulting from the performance or use of this product.

The company does not issue a warranty of any kind, express or implied, including without limitation implied warranties of merchantability or fitness for a particular purpose.

The company has the right to revise the manual or include changes in the specifications of the product described within it at any time without notice and without obligation to notify any person of such revision or changes.

## **Trademark**

All trademarks are the property of their respective holders.

---

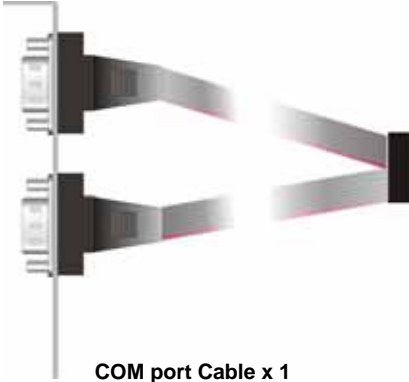
Any questions please visit our website at <http://www.commell.com.tw>.

## Packing List:

### Hardware :

MP-954GPS Mini-PCI GPS Card x1

### Cable Kit :



COM port Cable x 1

### Printed Matter :

MP-954GPS User's Manual

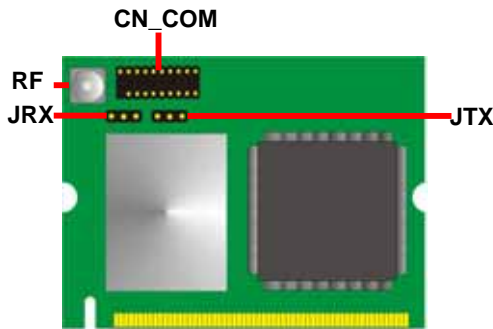
### CD Content :

Drivers & User's Manual

## 1.1 <Product Specification>

General Specification	
Form Factor	Mini-PCI TYPE III B
Controller	OXFORD OXmPCI954
Features	Three 16C950 High performance UART channels, first channel for GPS
GPS Chipset	SiRF Star III
GPS Features	Tracking Sensitivity: -159dBm Support NMEA 0183 and SiRF binary protocol
GPS Baud Rate	4,800 bps

1.2<Connector Assignment >



Connector: **CN\_COM**  
Type: 20-pin (10 x 2) header

Pin	Description	Pin	Description
1	DCD1-	2	RX1-
3	TX1-	4	DTR1-
5	Ground	6	DSR1-
7	RTS1-	8	CTS1-
9	RI1-	10	N/C
11	DCD2-	12	RX2-
13	TX2-	14	DTR2-
15	Ground	16	DSR2-
17	RTS2-	18	CTS2-
19	RI2-	20	N/C

Connector: **JRX**  
Type: 3-pin (3 x 1) header

Pin	Description	Pin	Description	Pin	Description
1	VCC	2	RX	3	Ground

Connector: **JTX**  
Type: 3-pin (3 x 1) header

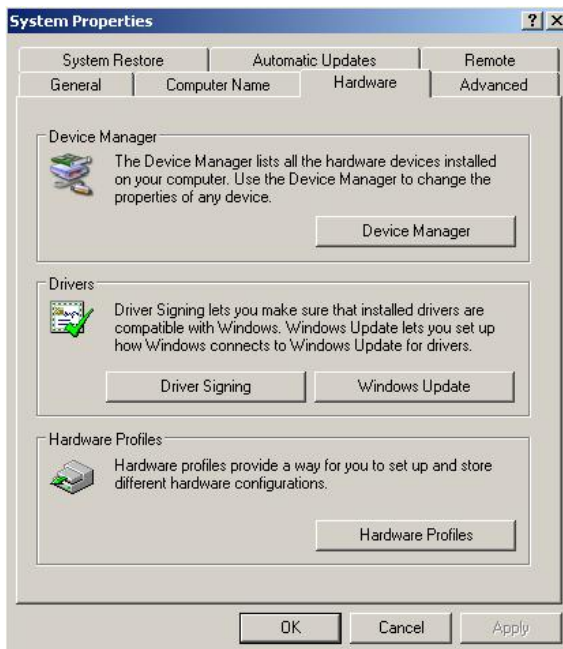
Pin	Description	Pin	Description	Pin	Description
1	VBAT	2	TX	3	Ground

Connector: **RF**  
Type: MCX connector

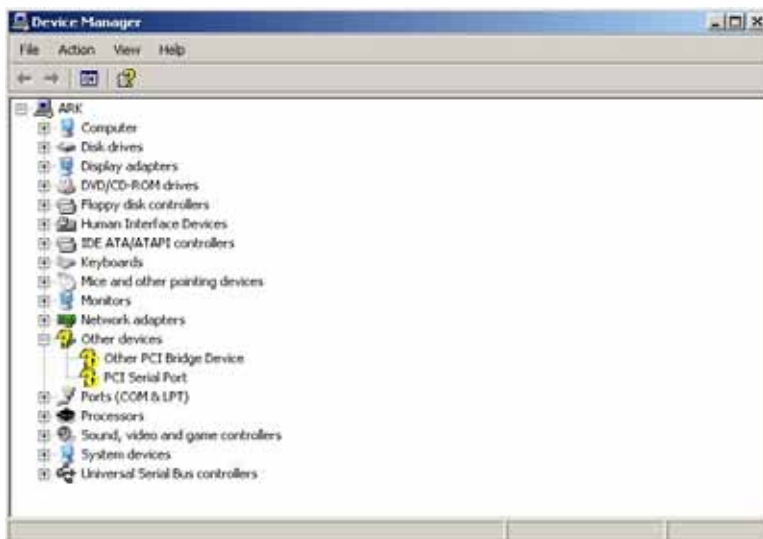
Pin	Description	Pin	Description	Pin	Description	Pin	Description	Pin	Description
1	RF receive	2	RF GND	3	RF GND	4	RF GND	5	RF GND

## 1.3<Driver Setting>

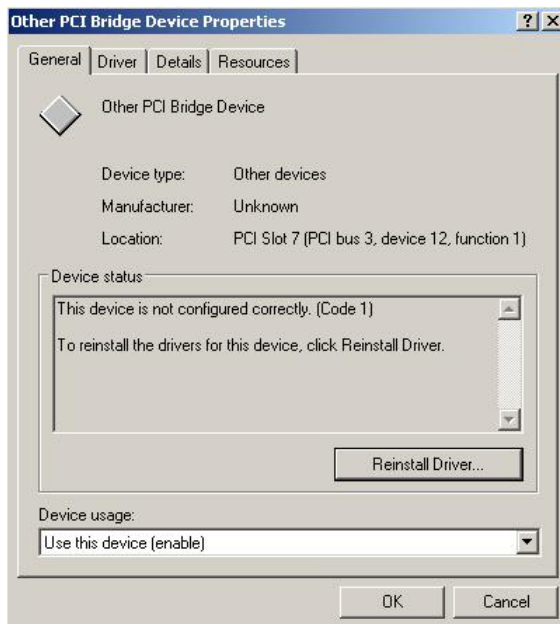
### 1. Please choose “Device Manager”



### 2. You can see other devices” Other PCI Bridge Device” and “PCI Serial Port”



4. Please choose "Other PCI Bridge Device" then press Reinstall Driver

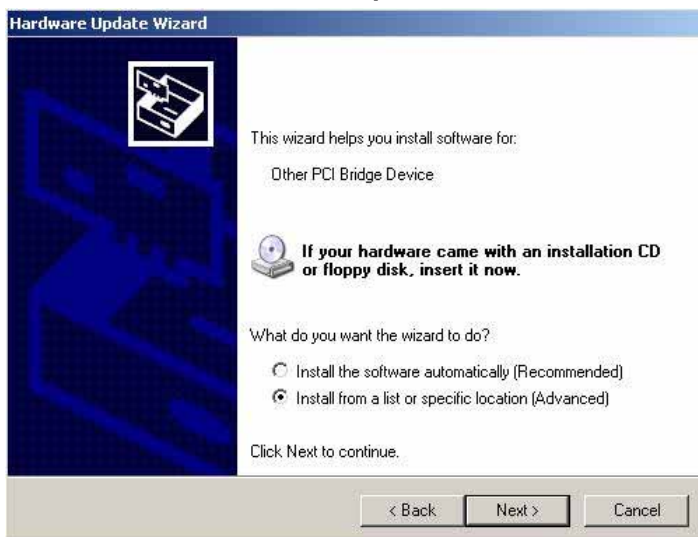


5. Please choose "NO, not this time"



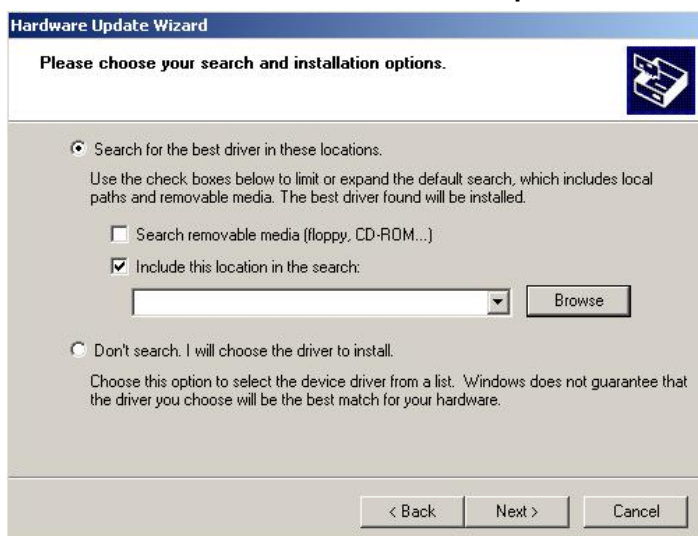
## 6. Install software for "Other PCI Bridge Device"

Please choose "Install from a list or specific location"



## 7. Please choose "Search for the best driver in these location"

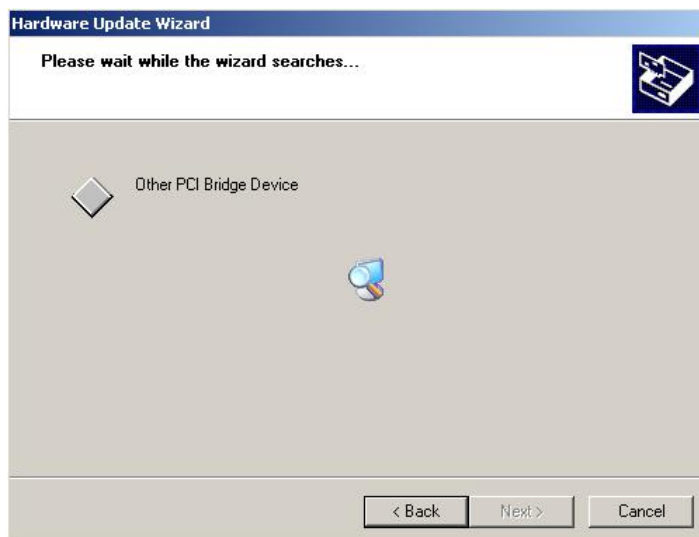
Check "Include this location in the search" then press "Browse"



**8. Please select the file location "CDROM:\Driver\MP-954\OXFORD"**



**9. Installing "Other PCI Bridge Device"**





## 10. Hardware Installation" PCI Function"

Press "Continue Anyway"



## 11. Completing the hardware update wizard



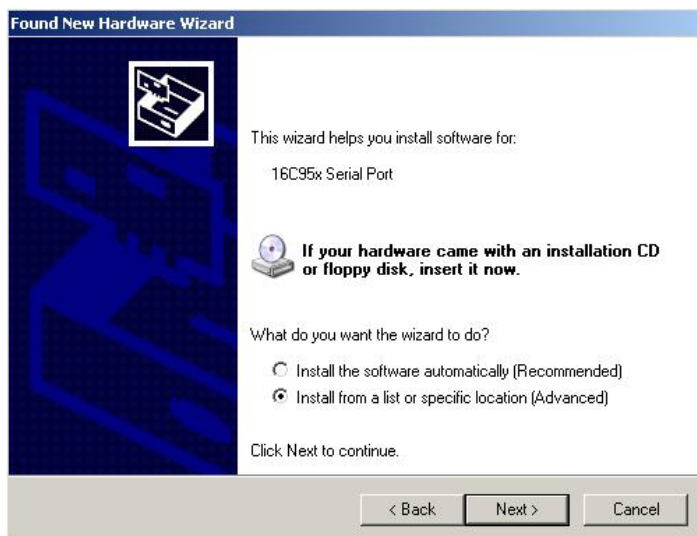
## 12. Please choose “PCI Serial Port” then press Reinstall Driver

Step same as 5~9, installing for “OX16PCI954 Triple PCI UARTs”



## 13. Found new hardware wizard “16C95x Serial Port”

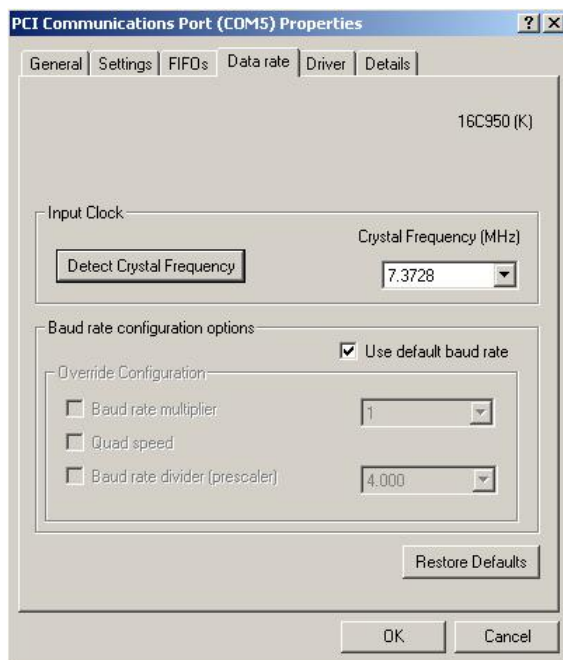
Please choose “Install from a list or specific location”



14.Install step same as 5~9

15.When install finish, please select “PCI Communications port”

Press “Detect Crystal Frequency”, then select 7.3728MHz



## Contact Information

Any advice or comment about our products and service, or anything we can help you please don't hesitate to contact with us. We will do our best to support you for your products, projects and business.

### Taiwan Commate Computer Inc.

Address 8F, No. 94, Sec. 1, Shin Tai Wu Rd., Shi Chih  
Taipei Hsien, Taiwan

TEL +886-2-26963909

FAX +886-2-26963911

Website <http://www.commell.com.tw>

E-Mail [info@commell.com.tw](mailto:info@commell.com.tw) (General Information)  
[tech@commell.com.tw](mailto:tech@commell.com.tw) (Technical Support)

**Commell is the trademark of Taiwan Commate Computer INC.**