

# MP-954

---

User's Manual

Edition 1.0



## **Copyright**

Copyright 2004 all rights reserved. This document is copyrighted and all rights are reserved. The information in this document is subject to change without prior notice to make improvements to the products.

This document contains proprietary information and protected by copyright. No part of this document may be reproduced, copied, or translated in any form or any means without prior written permission of the manufacturer.

All trademarks and/or registered trademarks contains in this document are property of their respective owners.

## **Disclaimer**

The company shall not be liable for any incidental or consequential damages resulting from the performance or use of this product.

The company does not issue a warranty of any kind, express or implied, including without limitation implied warranties of merchantability or fitness for a particular purpose.

The company has the right to revise the manual or include changes in the specifications of the product described within it at any time without notice and without obligation to notify any person of such revision or changes.

## **Trademark**

All trademarks are the property of their respective holders.

---

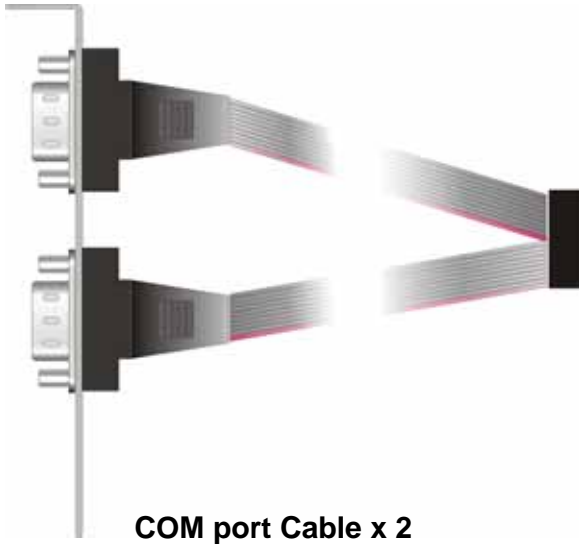
Any questions please visit our website at <http://www.commell.com.tw>.

## Packing List:

Hardware :

MP-954 Mini-PCI Card x1

Cable Kit :



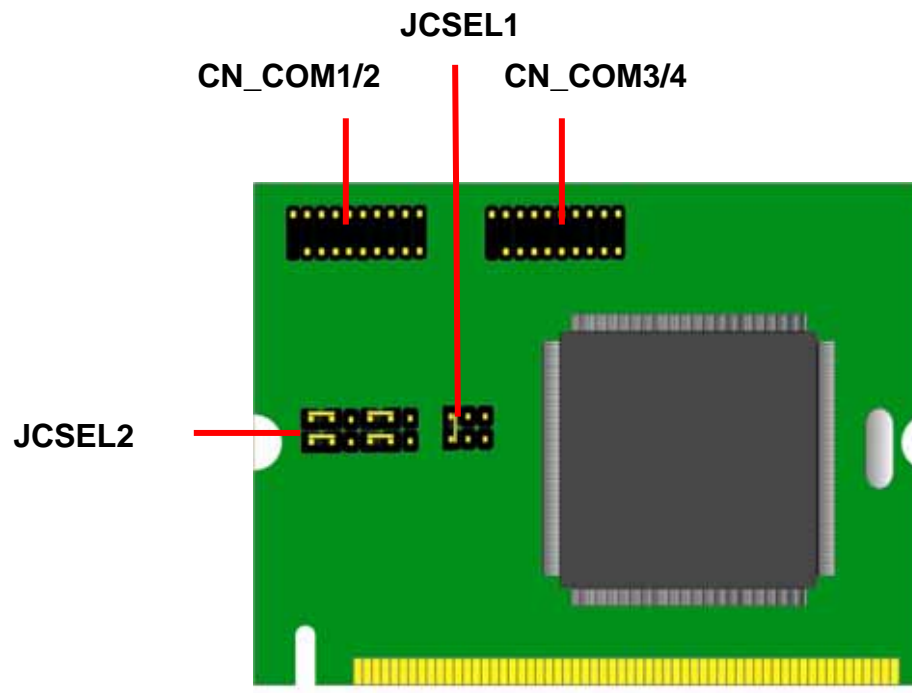
CD Content :

Drivers & User's Manual

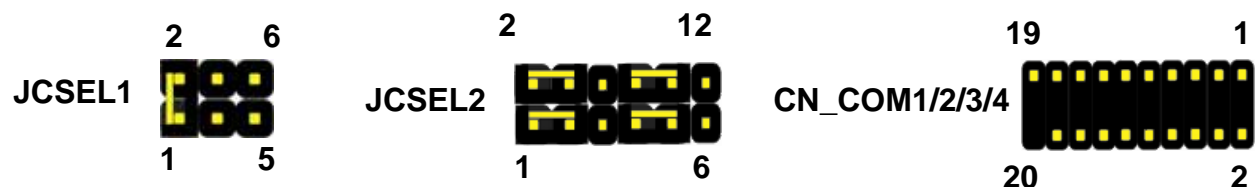
## 1.0 <Product Specification>

General Specification	
Form Factor	Mini-PCI TYPE III B
Controller	OXFORD OXmPCI954
Features	Four 16C950 High performance UART channels

## 1.1 <Connector Location>









## 1.2 <Jumper Location & Reference>



## 1.3 <Specifications>

Specifications	
Form Factor	Mini-PCI TYPEIIIB
Controller	OXmPCI954-LQ-A
Accessories	2X10 com port cable X2

## 1.4<Jumper Setting>

	JCSEL1	JCSEL2
RS-232		
RS-485		
RS-422		

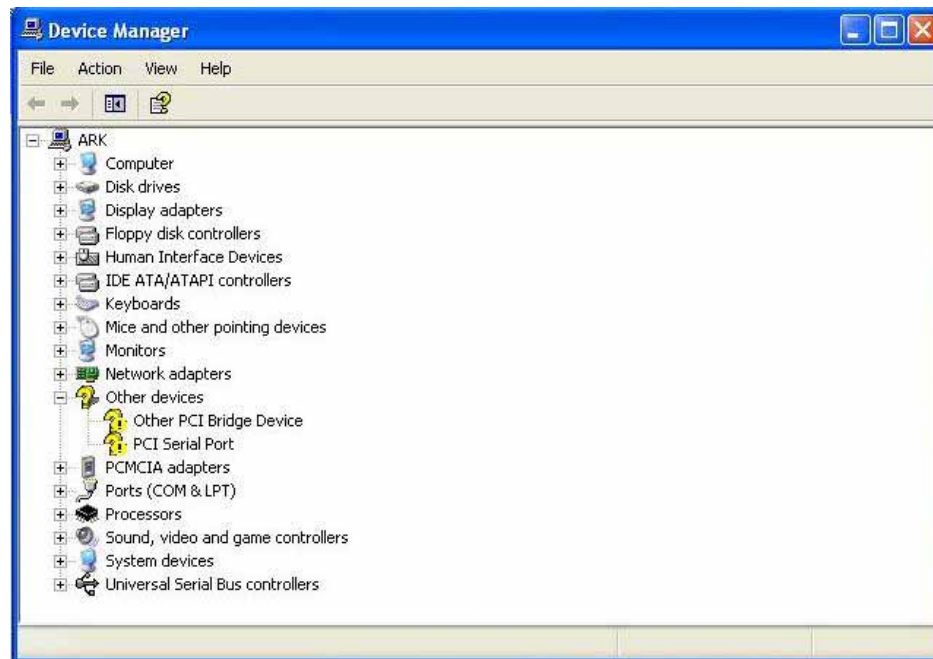
RS422/485 output form COM2

## 1.5 <Driver Setting>

1. Please choose **Device Manager**



## 2. Then you can see **Other devices**



## 3. Please choose **Other PCI Bridge Device** then press **Reinstall Driver**



4. Please choose **NO** , not this tme press Next



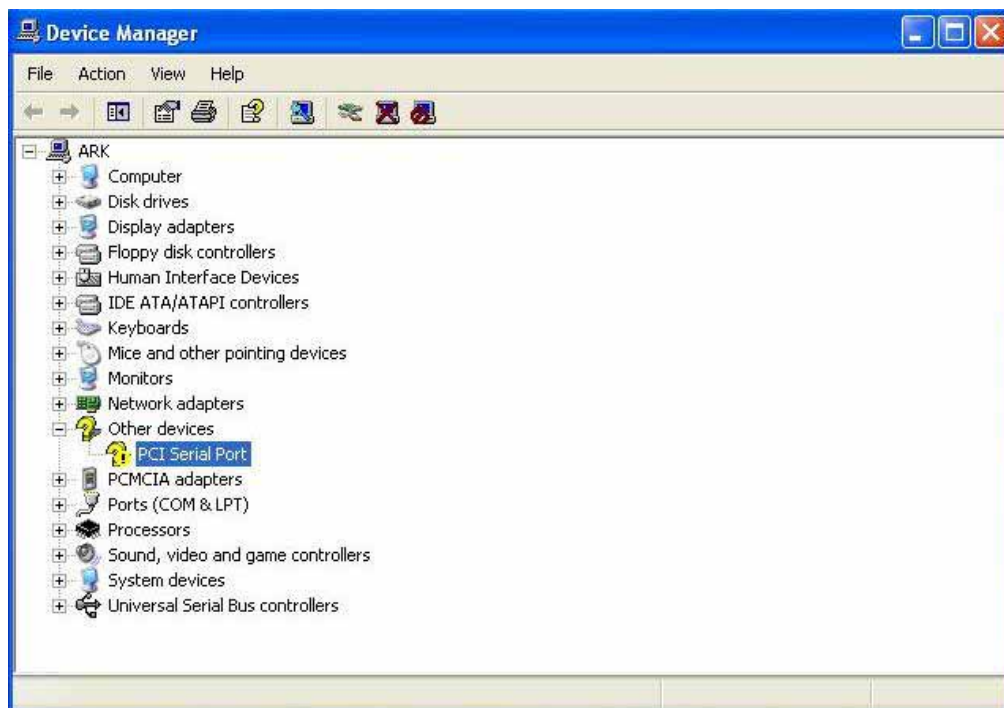
5 . Please choose **Install from a list on specific location.**



**6 . Please select file location [CDROM:\OXFORD\Ox954\\_V4\\_09](#)  
Press OK~**



**7. After Other PCI Bridge Device Driver setting please choose  
PCI Serial Port then press mouse right key select properties**





## 8. Please choose **Reinstall Driver**



## 9. Please choose **NO** , not this tme press Next



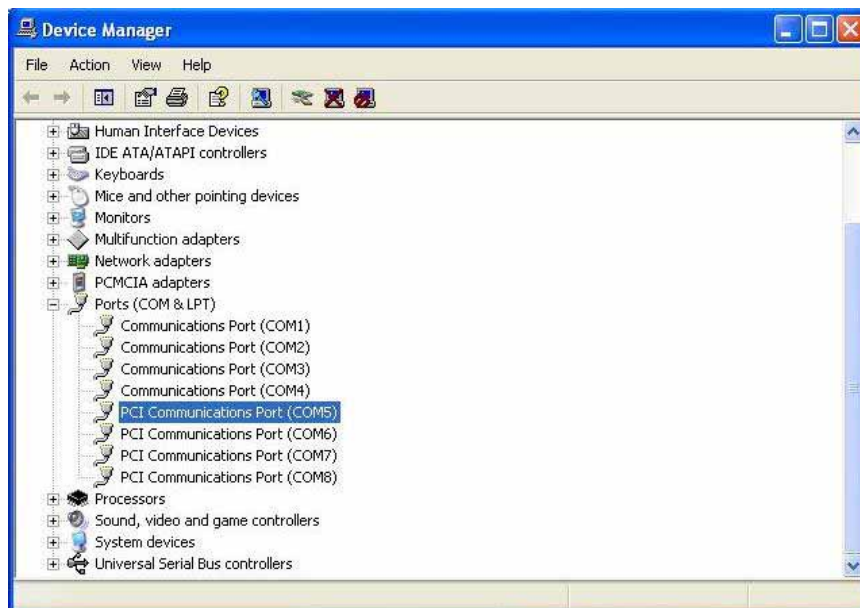
10. Please choose **Install from a list on specific location** press next



11. Please select file location **CDROM:\OXFORD\Ox954\_V4\_09**  
**Press OK**



**12. After driver install , please enter Device Manager then select **PCI Communications Port (COM5)** press properties.**

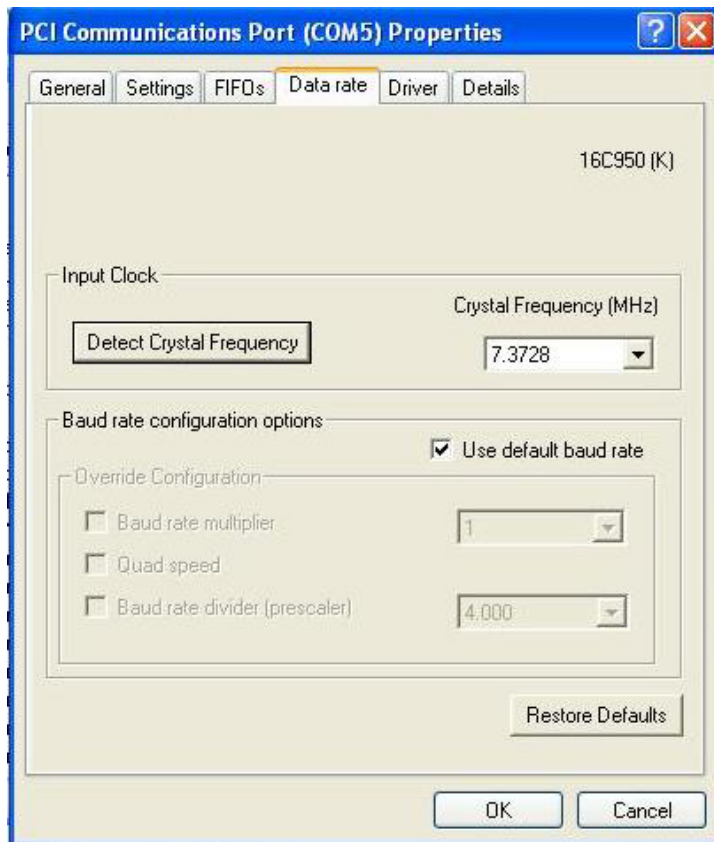


**13. Please select **Data rate****



14. Please press **Detect Crystal Frequency**.

Then COM 6 7 8 all must press **Detect Crystal Frequency**.



## 1.6< Connector Assignment >

Connector: **CN\_COM1/2**

Type: 20-pin (10 x 2) header



Pin	Description	Pin	Description
1	DCD1-	2	RXD1-
3	TXD1-	4	DTR1-
5	Ground	6	DSR1-
7	RTS1-	8	CTS1-
9	RI1-	10	N/C
11	DCD2-/422TX-/485-	12	RXD2-/422TX+/485+
13	TXD2-/422RX+	14	DTR2-/422RX-
15	Ground	16	DSR2-
17	RTS2-	18	CTS2-
19	RI2-	20	N/C

Connector: **CN\_COM3/4**

Type: 20-pin (10 x 2) header

Pin	Description	Pin	Description
1	DCD3-	2	RXD3-
3	TXD3-	4	DTR3-
5	Ground	6	DSR3-
7	RTS3-	8	CTS3-
9	RI3-	10	N/C
11	DCD4-	12	RXD4-
13	TXD4-	14	DTR4-
15	Ground	16	DSR4-
17	RTS4-	18	CTS4-
19	RI4-	20	N/C

## Contact Information

Any advice or comment about our products and service, or anything we can help you please don't hesitate to contact with us. We will do our best to support you for your products, projects and business.

### Taiwan Commate Computer Inc.

---

Address 8F, No. 94, Sec. 1, Shin Tai Wu Rd., Shi Chih  
Taipei Hsien, Taiwan

TEL +886-2-26963909

FAX +886-2-26963911

Website <http://www.commell.com.tw>

E-Mail [info@commell.com.tw](mailto:info@commell.com.tw) (General Information)  
[tech@commell.com.tw](mailto:tech@commell.com.tw) (Technical Support)

---

**Commell is the trademark of Taiwan commate computer INC**