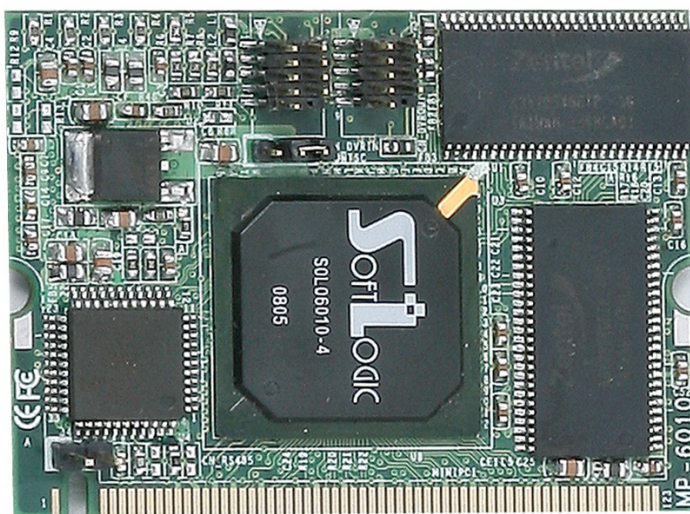


MP-6010

User's Manual

Edition 1.0

2008/06/20



Copyright

Copyright 2008 all rights reserved. This document is copyrighted and all rights are reserved. The information in this document is subject to change without prior notice to make improvements to the products.

This document contains proprietary information and protected by copyright. No part of this document may be reproduced, copied, or translated in any form or any means without prior written permission of the manufacturer.

All trademarks and/or registered trademarks contains in this document are property of their respective owners.

Disclaimer

The company shall not be liable for any incidental or consequential damages resulting from the performance or use of this product.

The company does not issue a warranty of any kind, express or implied, including without limitation implied warranties of merchantability or fitness for a particular purpose.

The company has the right to revise the manual or include changes in the specifications of the product described within it at any time without notice and without obligation to notify any person of such revision or changes.

Trademark

All trademarks are the property of their respective holders.

Any questions please visit our website at <http://www.commell.com.tw>.

Packing List:

Hardware:

MP-6010 Mini-PCI Capture Card x1

Cable kit:

D-SUB 9 Cable x 2



4 Channel video and audio input Cable x 1



video and audio output Cable x 1



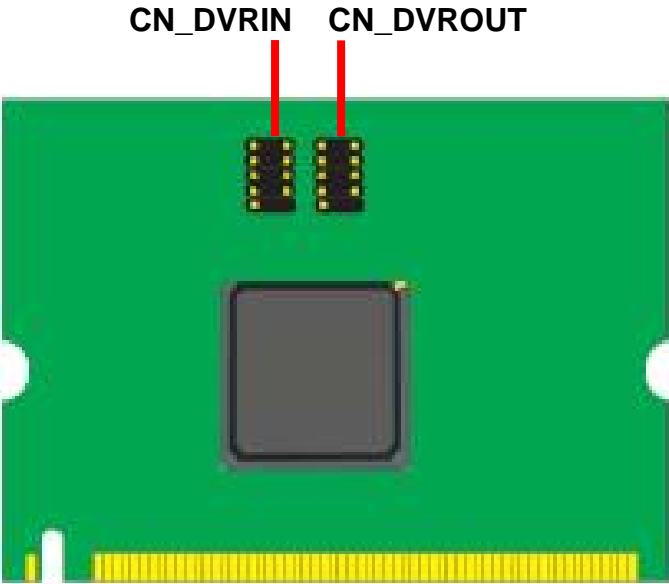
CD Content:

Drivers & User's Manual

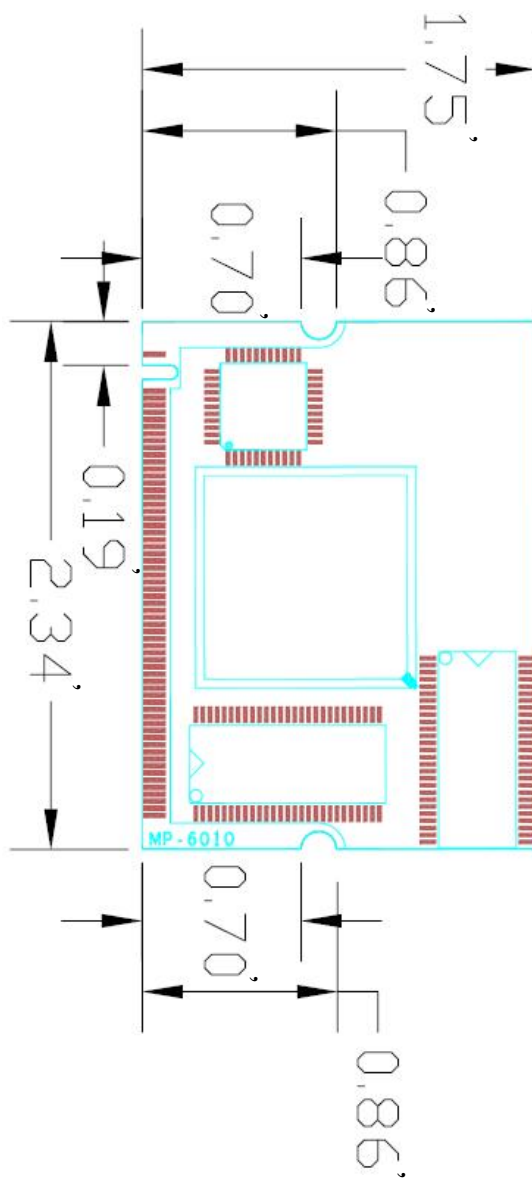
1.0 <Product Specification>

General Specification	
Form Factor	Mini-PCI Type III B with 124-pin interface
Video Decode Chipset	Softlogic solo6010-4
Accessories	2 x 10-pin header to D-SUB 9 Cable 1 x 4 Channel video and audio input Cable 1 x video and audio output Cable
Features	MPEG4 hardware compression Video Capture Card 4 Channel Video & Audio inputs MAX resolution: NTSC at 704*480 PAL at 704*576

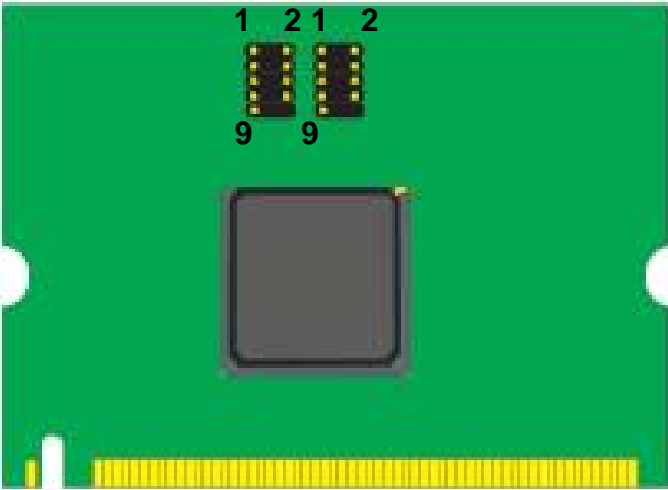
1.1 <Component Placement>



1.2 <Mechanical Drawing>



1.3 <Connector Reference>



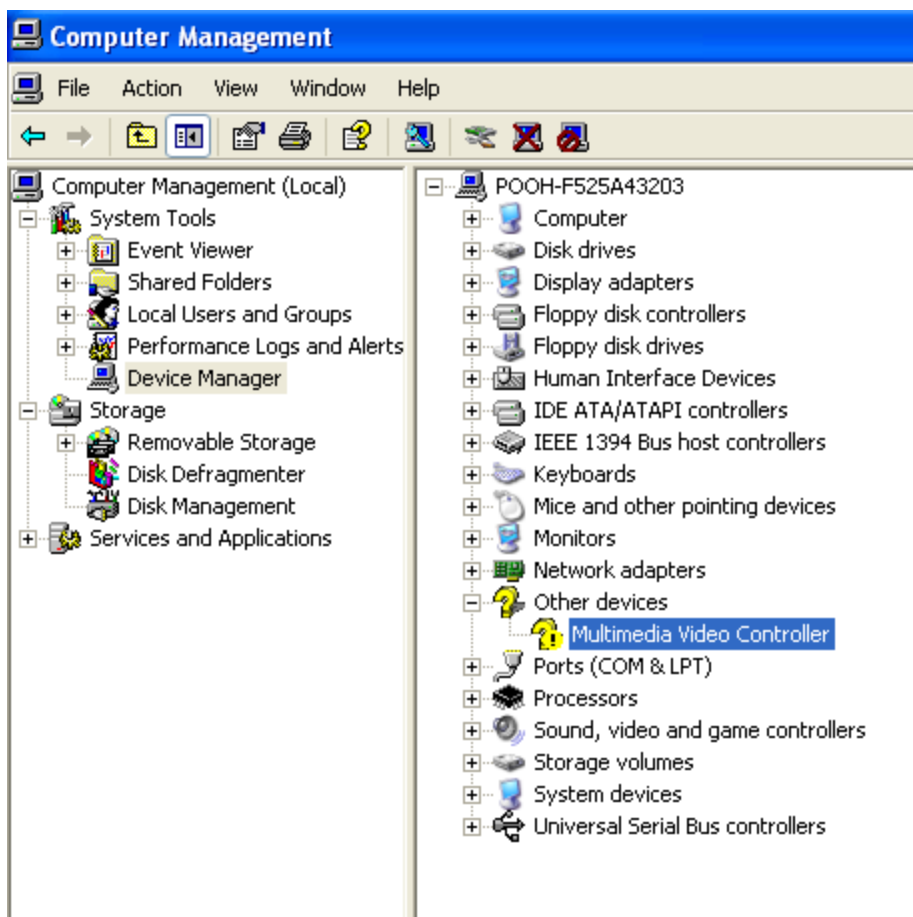
Connector: CN_ DVRIN & CN_DVROUT
Type: 10-pin (5x2) header(1.27mm) X 2

Pin	Description	Pin	Description
1	P_VI_CH1	2	P_VI_CH2
3	P_VI_CH3	4	P_VI_CH4
5	Ground	6	P_AI_CH1
7	P_AI_CH2	8	P_AI_CH3
9	P_AI_CH4	10	N/C
1	Ground	2	Composite_OUT
3	Ground	4	Y_OUT
5	Ground	6	C_OUT
7	Ground	8	AudioL_OUT
9	AudioR_OUT	10	N/C

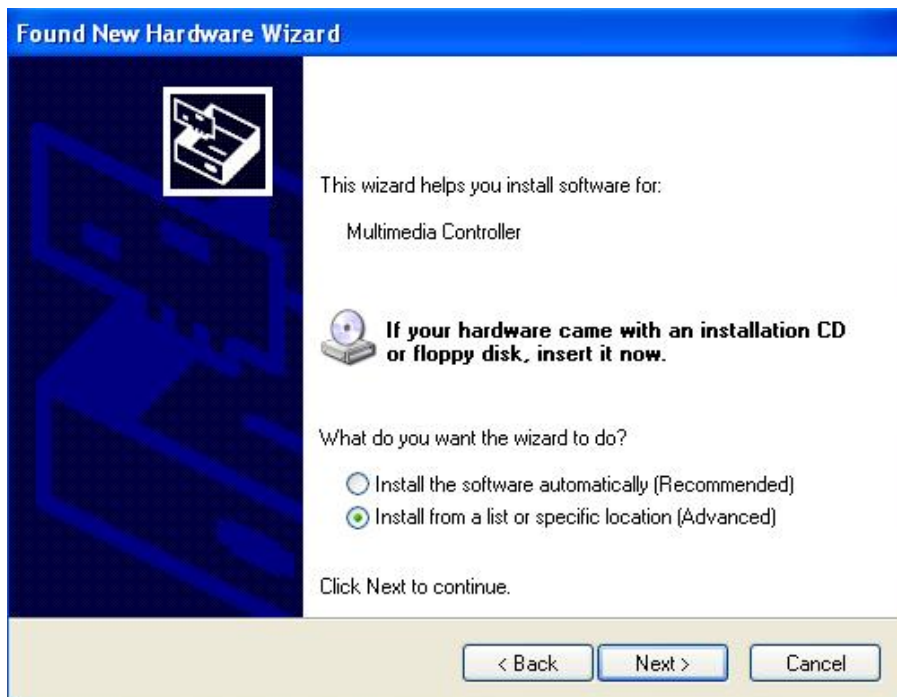
1.4 <Driver Setting>

1. Please choose **Device Manager**

then you can see **other devices**



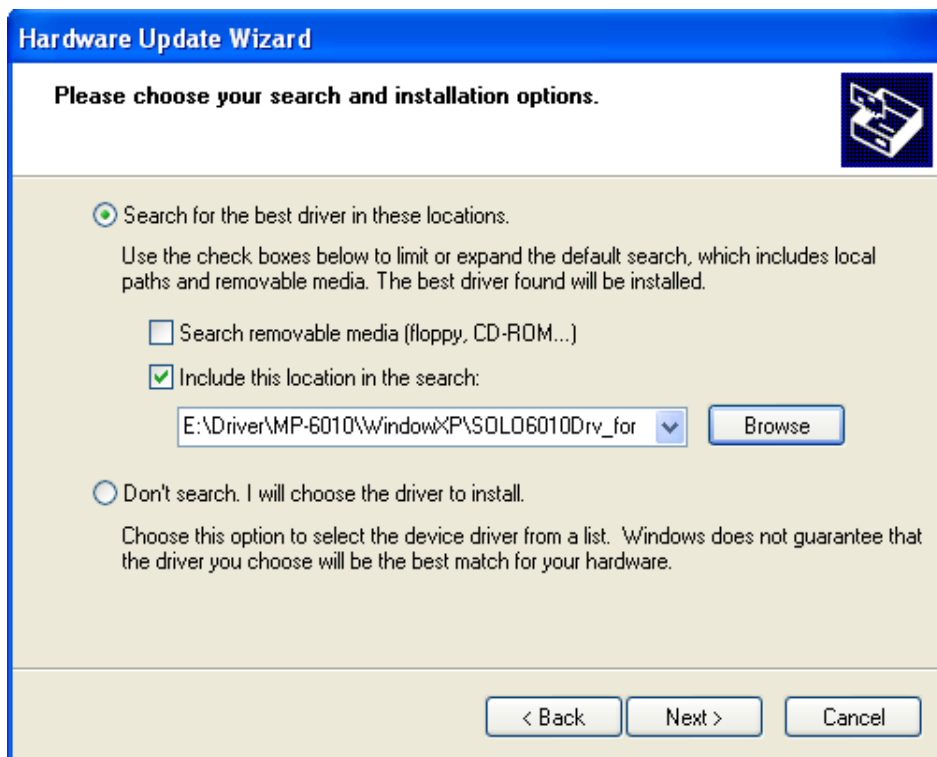
2. Please choose **Multimedia Controller** then press **advanced**



3. Please select file location

E:\Driver\MP-6010\WindowXP

\SOLO6010Drv_forWinXP_DDK_VS2003



The screenshot shows a Windows Hardware Update Wizard window. The title bar is blue and says "Hardware Update Wizard". The main area has a light beige background. At the top, it says "Please choose your search and installation options." with a small icon of a computer with a question mark. There are two radio buttons. The first is selected and says "Search for the best driver in these locations." Below it, a paragraph explains that check boxes can limit or expand the search. There are two check boxes: "Search removable media (floppy, CD-ROM...)" which is unchecked, and "Include this location in the search:" which is checked. Below the second check box is a text box containing the path "E:\Driver\MP-6010\WindowXP\SOLO6010Drv_for" and a "Browse" button. The second radio button is unselected and says "Don't search. I will choose the driver to install." Below it, a paragraph explains that this option is for selecting a driver from a list. At the bottom, there are three buttons: "< Back", "Next >", and "Cancel".

Hardware Update Wizard

Please choose your search and installation options.

☒ Search for the best driver in these locations.

Use the check boxes below to limit or expand the default search, which includes local paths and removable media. The best driver found will be installed.

☐ Search removable media (floppy, CD-ROM...)

☒ Include this location in the search:

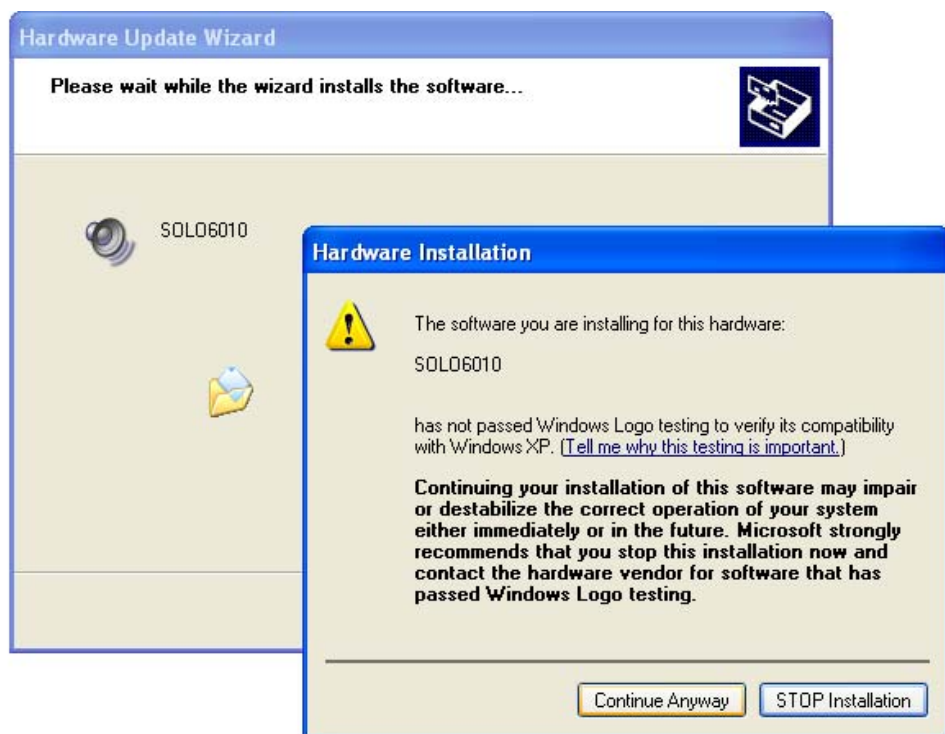
E:\Driver\MP-6010\WindowXP\SOLO6010Drv_for

☐ Don't search. I will choose the driver to install.

Choose this option to select the device driver from a list. Windows does not guarantee that the driver you choose will be the best match for your hardware.

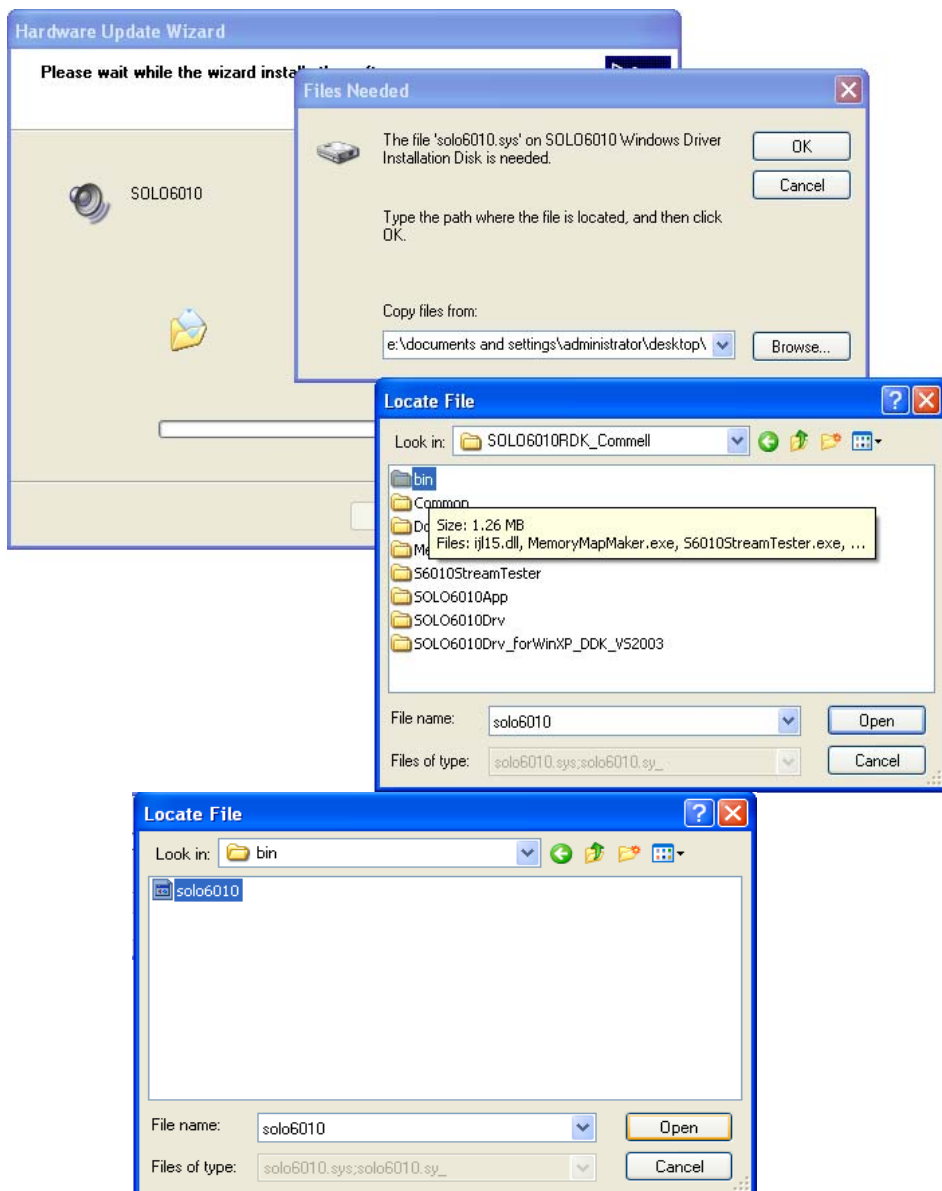
< Back Next > Cancel

4. Please press **continue anyway**

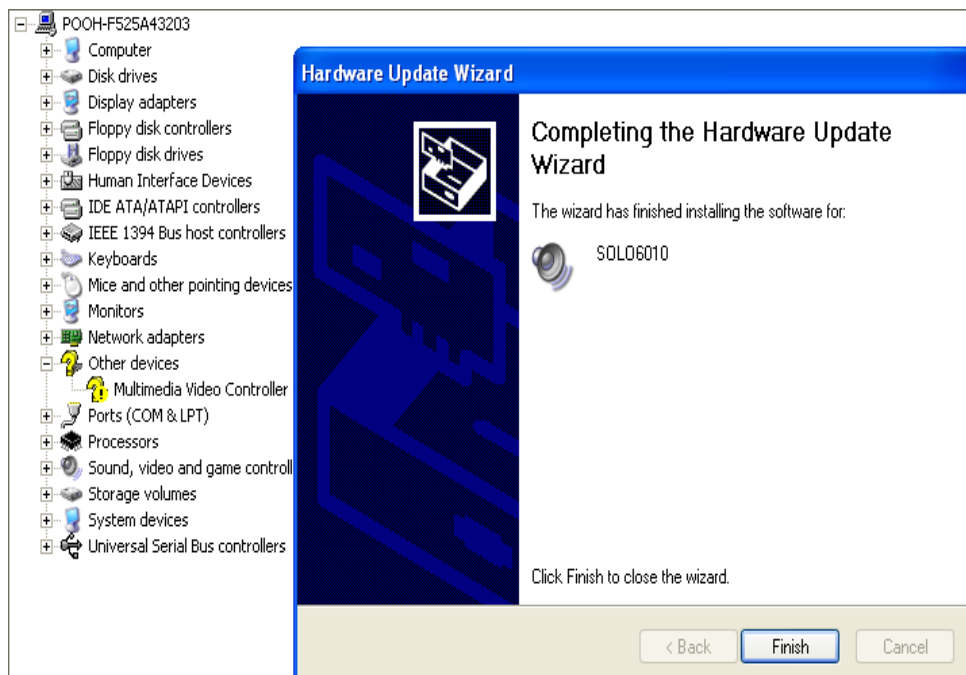


6. Please select file location

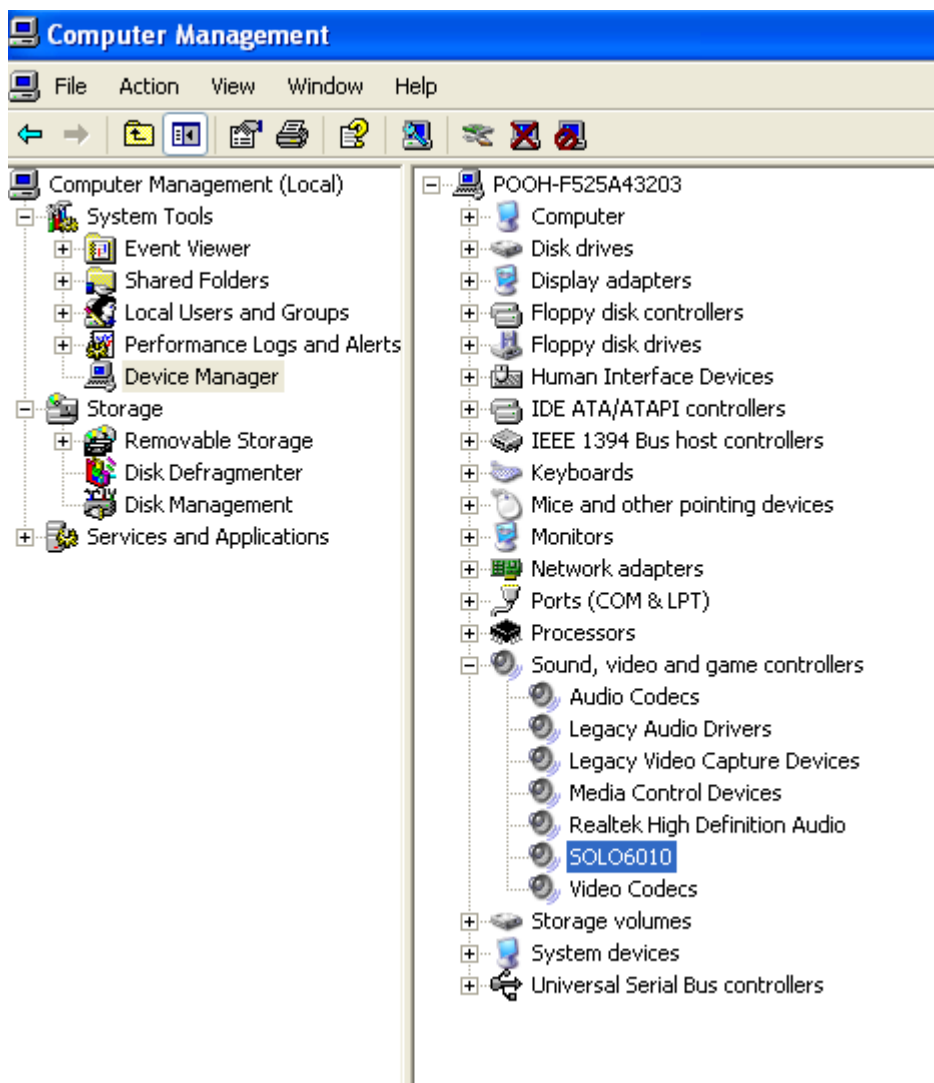
E:\Driver\MP-6010\WindowXP\bin\solo6010.sys



7. Press Finish



8. Driver install succeed

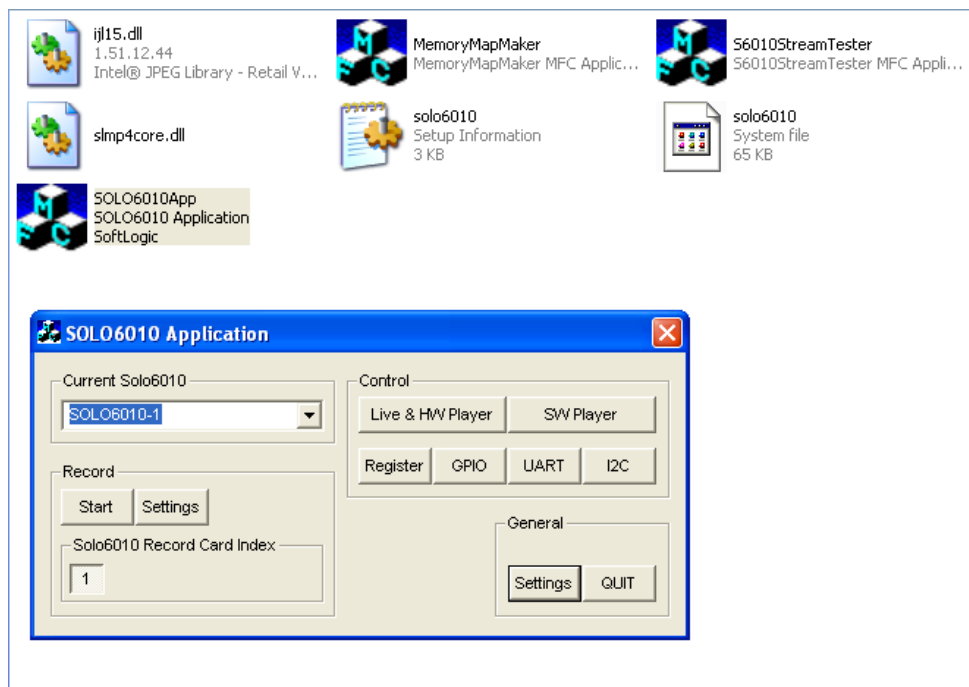


1.5 <Application Setting & Functions>

1. Please select SDK location

E:\Driver\MP-6010\WindowXP\bin

then press SOLO6010App



2.Press General Setting

Live Display Mode select

5. Memory to Overlay , 60 field/sec or

6. Memory to Overlay , 30 frame/sec

VGA Card select Intel Onboard VGA

General Setting Dialog

Record File Save Directory
C:\

Video Type
☒ NTSC
☐ PAL

Set Mosaic and Video Motion Property ...

Live Display Mode
☐ 1. 1 Overlay surface, 60 field/sec, No flip
☐ 2. 1 Overlay surface, 30 frame/sec, No flip
☐ 3. N Overlay surface, 60 field/sec, Flip
☐ 4. N Overlay surface, 30 frame/sec, Flip
☐ 5. Memory to Overlay, 60 field/sec
☒ 6. Memory to Overlay, 30 frame/sec
☐ 7. N Overlay surface, 30 field/sec, Flip

Video Card
☒ Intel Onboard VGA
☐ NVidia GeForce
☐ ATI Radeon
☐ Other

Deinterlacing
☒ BOB
☐ Weave (No deinterlacing)

Number of surfaces (for mode 3, 4)
 3 Default

Camera to Decoder Channel (Matrix)

1	Cam 01	9	Cam 09
2	Cam 02	10	Cam 10
3	Cam 03	11	Cam 11
4	Cam 04	12	Cam 12
5	Cam 05	13	Cam 13
6	Cam 06	14	Cam 14
7	Cam 07	15	Cam 15
8	Cam 08	16	Cam 16

MPEG4
 Recording method
☒ Multi channel file
☐ Single channel file

Encoder OSD
☒ Channel
☒ Date
☒ Time
☒ Shadow effect on text

Color
 Y 255
 Cb 128
 Cr 128

Offset
 H 0
 V 0

G.723
 Recording method
☒ Multi channel file
☐ Single channel file

OK
Cancel

3.Main Function

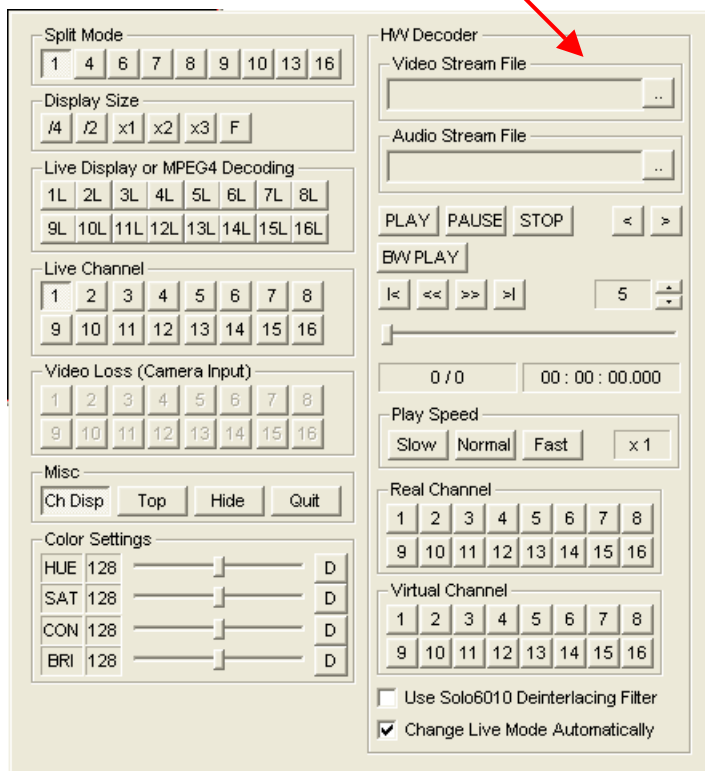
1. Live & HW player

The live display and hardware player can be tested using this function

Load file

video → xxx.MR4

audio → xxx.RG7

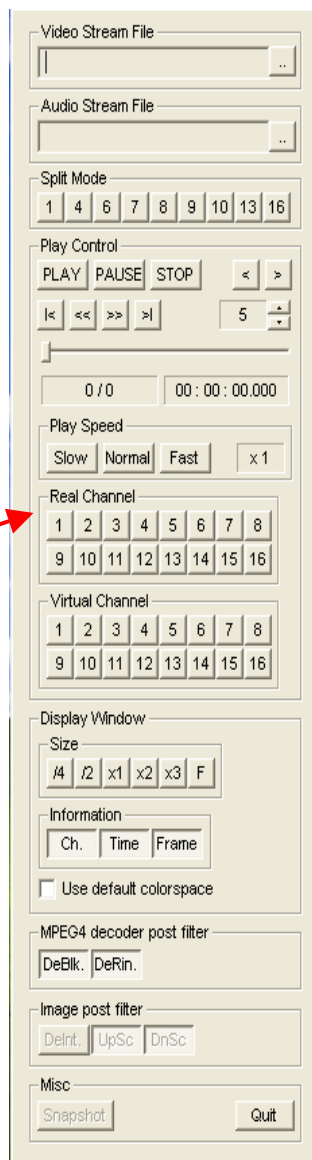


2. SW player

The recorded MPEG4 file can be played back using this function

Select audio channel

The audio played back only one channel



Record setting

FPS → 60 FOR test

Video channel

audio channel

Record Setting Dialog

Video
☒ Real Channel ☐ Virtual Channel

MPEG4

	Quality	GOP	Img. Size	FPS	I.B.P.	Bitrate	CBR Buffer
All		0					
1	3	15	704x240 Field	60		VBR	5 sec
2	3	15	704x240 Field	60		VBR	5 sec
3	3	15	704x240 Field	60		VBR	5 sec
4	3	15	704x240 Field	60		VBR	5 sec
5	3	15	704x240 Field	60		VBR	5 sec
6	3	15	704x240 Field	60		VBR	5 sec
7	3	15	704x240 Field	60		VBR	5 sec
8	3	15	704x240 Field	60		VBR	5 sec
9	3	15	704x240 Field	60		VBR	5 sec
10	3	15	704x240 Field	60		VBR	5 sec
11	3	15	704x240 Field	60		VBR	5 sec
12	3	15	704x240 Field	60		VBR	5 sec
13	3	15	704x240 Field	60		VBR	5 sec
14	3	15	704x240 Field	60		VBR	5 sec
15	3	15	704x240 Field	60		VBR	5 sec
16	3	15	704x240 Field	60		VBR	5 sec

JPEG

Audio (G.723)
 Sampling Rate
 8KHz

Channel
 1, 2
 3, 4
 5, 6
 7, 8
 9, 10
 11, 12
 13, 14
 15, 16

OK
 Cancel

Contact Information

Any advice or comment about our products and service, or anything we can help you please don't hesitate to contact with us. We will do our best to support you for your products, projects and business.

Taiwan Commate Computer Inc.

Address 8F, No. 94, Sec. 1, Shin Tai Wu Rd., Shi Chih
Taipei Hsien, Taiwan

TEL +886-2-26963909

FAX +886-2-26963911

Website <http://www.commell.com.tw>

E-Mail info@commell.com.tw (General Information)
tech@commell.com.tw (Technical Support)

Commell is the trademark of Taiwan Commate Computer INC.